

Product datasheet for **TA349080**

NOX1 Rabbit Polyclonal Antibody

Product data:

Product Type:	Primary Antibodies
Applications:	IF, IHC, WB
Recommended Dilution:	WB: 1 - 2 ug/mL, IHC: 5 ug/mL, IF: 20 ug/mL
Reactivity:	Human
Host:	Rabbit
Isotype:	IgG
Clonality:	Polyclonal
Immunogen:	NOX1 antibody was raised against a 15 amino acid peptide near the center of human NOX1.
Formulation:	PBS containing 0.02% sodium azide.
Concentration:	1 mg/ml
Purification:	NOX1 antibody is affinity chromatography purified via peptide column.
Conjugation:	Unconjugated
Storage:	Store at -20°C as received.
Stability:	Stable for 12 months from date of receipt.
Predicted Protein Size:	Predicted: 62 kDa; Observed: 64 kDa
Gene Name:	NADPH oxidase 1
Database Link:	NP_008983 Entrez Gene 27035 Human Q9Y5S8

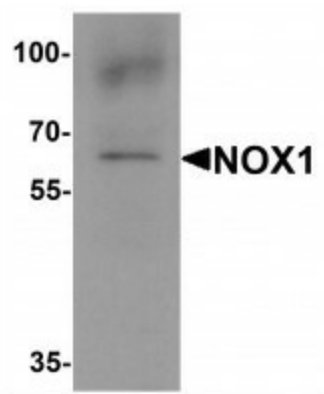
Background: Voltage-gated proton (hydrogen) channels play an important role in cellular defense against acidic stress (1). NOX1 is a homolog of the catalytic subunit of the superoxide-generating NADPH oxidase of phagocytes, gp91phox (1). Three splice variants of NOX1 have been identified, NOH-1L, NOH-1S and NOH-1Lv (2). NOH-1S is a voltage-gated proton channel that participates in the regulation of cellular pH and is blocked by zinc. NOH-1L is a pyridine nucleotide-dependent oxidoreductase that generates superoxide and might conduct H(+) ions as part of its electron transport mechanism, whereas NOH-1S does not contain an electron transport chain (1-3). NOX1 have the potential to be effective treatments for a range of ischemic diseases (4).



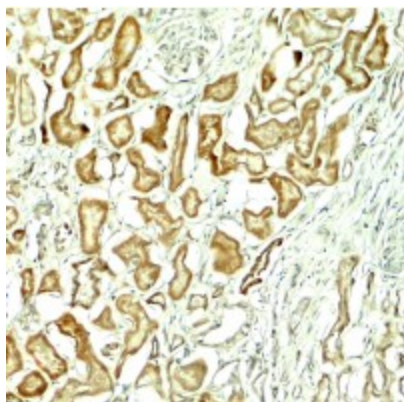
[View online »](#)

Synonyms: SWIP1; WSB-1

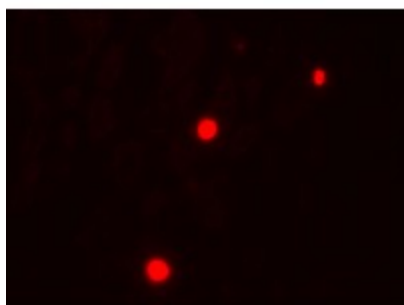
Product images:



Western blot analysis of NOX1 in 293 cell lysate with NOX1 antibody at 1 ug/mL.



Immunohistochemistry of NOX1 in human kidney tissue with NOX1 antibody at 5 ug/mL.



Immunofluorescence of NOX1 in human kidney tissue with NOX1 antibody at 20 ug/mL.