

## Product datasheet for **TA349079**

### SOX18 Rabbit Polyclonal Antibody

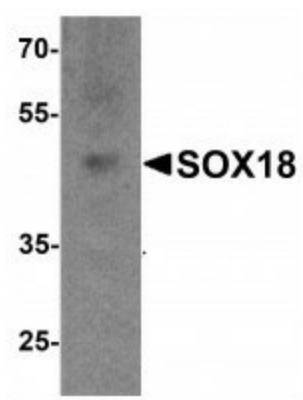
#### Product data:

Product Type:	Primary Antibodies
Applications:	WB
Recommended Dilution:	WB: 1 - 2 ug/mL
Reactivity:	Human, Mouse, Rat
Host:	Rabbit
Isotype:	IgG
Clonality:	Polyclonal
Immunogen:	SOX18 antibody was raised against a 17 amino acid peptide near the amino terminus of human SOX18.
Formulation:	PBS containing 0.02% sodium azide.
Concentration:	1 mg/ml
Purification:	SOX18 antibody is affinity chromatography purified via peptide column.
Conjugation:	Unconjugated
Storage:	Store at -20°C as received.
Stability:	Stable for 12 months from date of receipt.
Predicted Protein Size:	Predicted: 42 kDa; Observed: 44 kDa
Gene Name:	SRY-box 18
Database Link:	<a href="#">NP_060889</a> <a href="#">Entrez Gene 54345 Human P35713</a>
Background:	SOX18 is a member of the SOX (SRY-related HMG-box) family of transcription factors involved in the regulation of embryonic development and in the determination of cell fate (1,2). SOX18 is part of the SoxF subgroup which plays an important role in the differentiation of different cell types (3). SOX is known to be involved with vascularization and endothelial development, suggesting that it may be useful as a potential target for inhibiting tumor angiogenesis (4). Mutations in this gene have been associated with recessive and dominant forms of hypotrichosis-lymphedema-telangiectasia (5).
Synonyms:	EPLIN; SREBP3



[View online »](#)

## Product images:



Western blot analysis of SOX18 in 3T3 cell lysate with SOX18 antibody at 1 ug/mL.