

Product datasheet for **TA349078**

SOX17 Rabbit Polyclonal Antibody

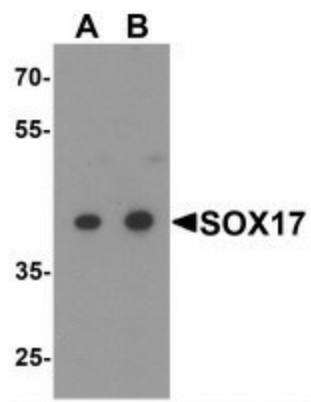
Product data:

Product Type:	Primary Antibodies
Applications:	IF, WB
Recommended Dilution:	WB: 0.5 - 1 ug/mL, IF: 20 ug/mL
Reactivity:	Human, Mouse, Rat
Host:	Rabbit
Isotype:	IgG
Clonality:	Polyclonal
Immunogen:	SOX17 antibody was raised against a 16 amino acid peptide near the center of human SOX17.
Formulation:	PBS containing 0.02% sodium azide.
Concentration:	1 mg/ml
Purification:	SOX17 antibody is affinity chromatography purified via peptide column.
Conjugation:	Unconjugated
Storage:	Store at -20°C as received.
Stability:	Stable for 12 months from date of receipt.
Predicted Protein Size:	Predicted: 46 kDa; Observed: 42 kDa
Gene Name:	SRY-box 17
Database Link:	NP_071899 Entrez Gene 64321 Human Q9H6I2
Background:	SOX17 is a member of the SOX (SRY-related HMG-box) family of transcription factors involved in the regulation of embryonic development and in the determination of cell fate (1,2). SOX17 is part of the SoxF subgroup which plays an important role in the differentiation of different cell types, including visceral and definitive endoderm and hematopoietic cell types (3,4). SOX17 is also essential for acquisition and maintenance of arterial identity (5).
Synonyms:	PRAJA1; RNF70

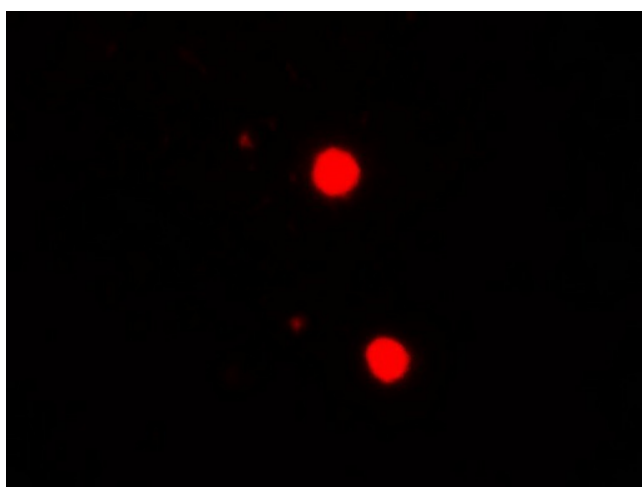


[View online »](#)

Product images:



Western blot analysis of SOX17 in HepG2 cell lysate with SOX17 antibody at (A) 0.5 and (B) 1 ug/mL.



Immunofluorescence of SOX17 in mouse liver tissue with SOX17 antibody at 20 ug/mL.