

## Product datasheet for **TA349077**

### alpha Synuclein (SNCA) Rabbit Polyclonal Antibody

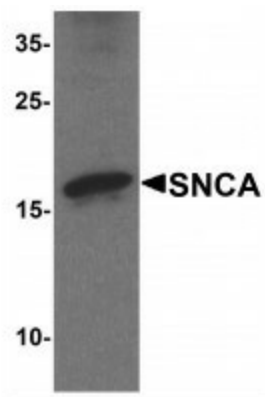
#### Product data:

Product Type:	Primary Antibodies
Applications:	IF, IHC, WB
Recommended Dilution:	WB: 1 - 2 ug/mL, IHC: 5 ug/mL, IF: 20 ug/mL
Reactivity:	Human, Mouse, Rat
Host:	Rabbit
Isotype:	IgG
Clonality:	Polyclonal
Immunogen:	SNCA antibody was raised against a 19 amino acid peptide near the carboxy terminus of human SNCA.
Formulation:	PBS containing 0.02% sodium azide.
Concentration:	1 mg/ml
Purification:	SNCA antibody is affinity chromatography purified via peptide column.
Conjugation:	Unconjugated
Storage:	Store at -20°C as received.
Stability:	Stable for 12 months from date of receipt.
Predicted Protein Size:	Predicted: 12 kDa; Observed: 16 kDa
Gene Name:	synuclein alpha
Database Link:	<a href="#">NP_000336</a> <a href="#">Entrez Gene 6622 Human P37840</a>
Background:	Alpha-Synuclein (SNCA) is a hallmark of Alzheimer's disease (1,2). It is a cytoplasmic protein that is predominantly expressed in the central nervous system (2). SNCA reduces neuronal responsiveness to various apoptotic stimuli, leading to the decreased caspase-3 activation. SNCA may be involved in the regulation of dopamine release and transport and induces fibrillization of microtubule-associated protein tau (3). Defects in SNCA are associated with familial Parkinson's disease (4,5).
Synonyms:	BAF190; BAF190A; BRG1; CSS4; hSNF2b; MRD16; RTPS2; SNF2; SNF2L4; SNF2LB; SWI2

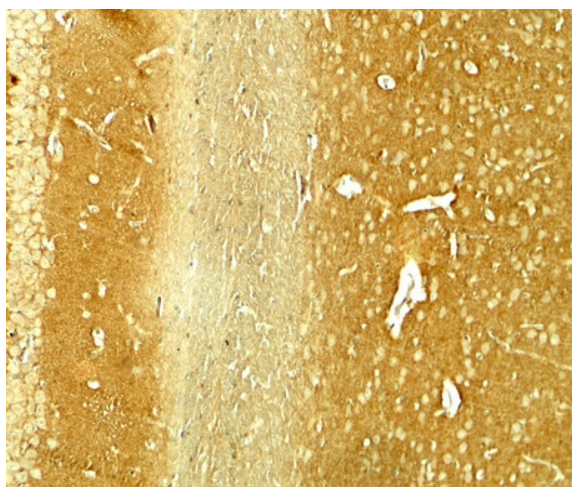


[View online »](#)

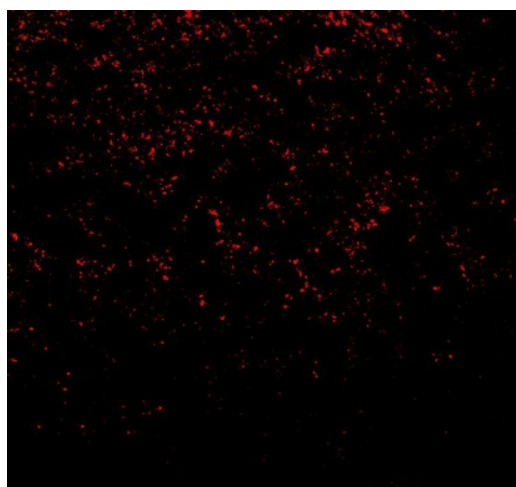
## Product images:



Western blot analysis of SNCA in mouse cerebellum tissue lysate with SNCA antibody at 1 ug/mL.



Immunohistochemistry of SNCA in rat brain tissue with SNCA antibody at 5 ug/mL.



Immunofluorescence of SNCA in rat brain tissue with SNCA antibody at 20 ug/mL.