

Product datasheet for **TA349076**

ATG4C Rabbit Polyclonal Antibody

Product data:

Product Type:	Primary Antibodies
Applications:	IF, IHC, WB
Recommended Dilution:	WB: 1 - 2 ug/mL, IHC: 5 ug/mL, IF: 20 ug/mL
Reactivity:	Human, Mouse, Rat
Host:	Rabbit
Isotype:	IgG
Clonality:	Polyclonal
Immunogen:	ATG4C antibody was raised against an 18 amino acid peptide near the carboxy terminus of human ATG4C
Formulation:	PBS containing 0.02% sodium azide.
Concentration:	1 mg/ml
Purification:	ATG4C antibody is affinity chromatography purified via peptide column.
Conjugation:	Unconjugated
Storage:	Store at -20°C as received.
Stability:	Stable for 12 months from date of receipt.
Predicted Protein Size:	Predicted: 50 kDa; Observed: 57 kDa
Gene Name:	autophagy related 4C cysteine peptidase
Database Link:	NP_835739 Entrez Gene 84938 Human Q96DT6

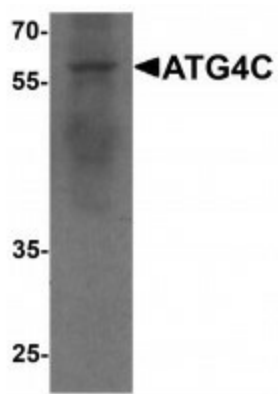
Background: Autophagy, the process of bulk degradation of cellular proteins through an autophagosomal-lysosomal pathway is important for normal growth control and may be defective in tumor cells. It is involved in the preservation of cellular nutrients under starvation conditions as well as the normal turnover of cytosolic components (1,2). ATG4C, also known as autophagin-3, is one of four mammalian orthologs of the yeast ATG4 protein; all four are cysteine proteases (3). Recent studies have shown that ATG4C and Beclin-1 are regulated by the microRNA miR-376b; overexpression of miR-376b led to decreased mRNA and protein levels, thereby blocking starvation and TOR inhibition-related autophagy (4).



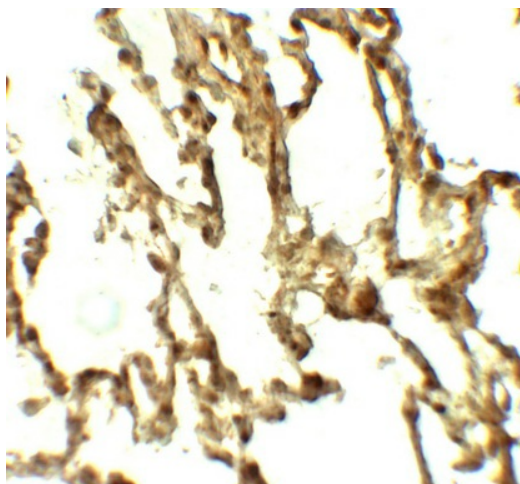
[View online »](#)

Synonyms: CRISTIN1; PWTSR; THSD2

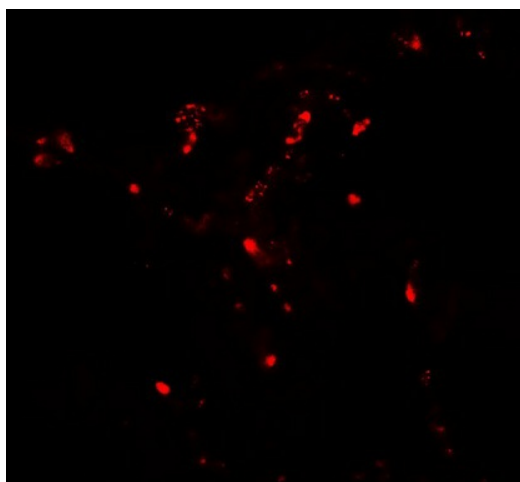
Product images:



Western blot analysis of ATG4C in A549 cell lysate with ATG4C antibody at 1 ug/mL.



Immunohistochemistry of ATG4C in human lung tissue with ATG4C antibody at 5 ug/mL.



Immunofluorescence of ATG4C in human lung tissue with ATG4C antibody at 20 ug/mL.