

Product datasheet for **TA349068**

PDCL2 Rabbit Polyclonal Antibody

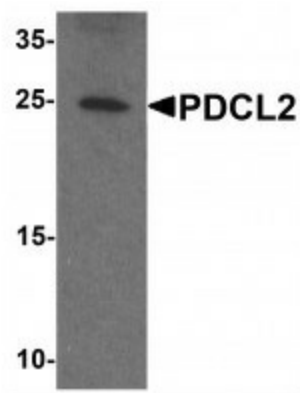
Product data:

Product Type:	Primary Antibodies
Applications:	WB
Recommended Dilution:	WB: 1 - 2 ug/mL
Reactivity:	Human, Mouse, Rat
Host:	Rabbit
Isotype:	IgG
Clonality:	Polyclonal
Immunogen:	PDCL2 antibody was raised against an 18 amino acid peptide near the carboxy terminus of human PDCL2.
Formulation:	PBS containing 0.02% sodium azide.
Concentration:	1 mg/ml
Purification:	PDCL2 antibody is affinity chromatography purified via peptide column.
Conjugation:	Unconjugated
Storage:	Store at -20°C as received.
Stability:	Stable for 12 months from date of receipt.
Predicted Protein Size:	Predicted: 27 kDa; Observed: 25 kDa
Gene Name:	phosducin like 2
Database Link:	NP_689614 Entrez Gene 79455 MouseEntrez Gene 498352 RatEntrez Gene 132954 Human Q8N4E4
Background:	Phosducin-like proteins (PhLPs) are a conserved family of proteins with thioredoxin-like domains that were initially identified as modulators of G protein signaling (1,2). PDCL2 is highly homologous to PDCL and shares an N-terminal helix domain and a C-terminal thioredoxin-fold (Trx-fold) domain (3). PDCL2 has been shown to interact with the chaperonin CCT and is essential for cytoskeletal protein function and cell cycle progression (4).
Synonyms:	GCPHLP



[View online »](#)

Product images:



Western blot analysis of PDCL2 in rat liver tissue lysate with PDCL2 antibody at 1 ug/mL.