

## Product datasheet for **TA349067**

### PDCL Rabbit Polyclonal Antibody

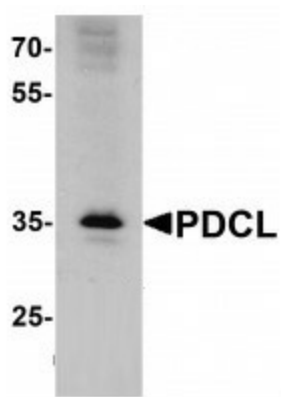
#### Product data:

Product Type:	Primary Antibodies
Applications:	WB
Recommended Dilution:	WB: 1 - 2 ug/mL
Reactivity:	Human, Mouse, Rat
Host:	Rabbit
Isotype:	IgG
Clonality:	Polyclonal
Immunogen:	PDCL antibody was raised against a 16 amino acid peptide near the amino terminus of human PDCL.
Formulation:	PBS containing 0.02% sodium azide.
Concentration:	1 mg/ml
Purification:	PDCL antibody is affinity chromatography purified via peptide column.
Conjugation:	Unconjugated
Storage:	Store at -20°C as received.
Stability:	Stable for 12 months from date of receipt.
Predicted Protein Size:	Predicted: 33 kDa; Observed: 35 kDa
Gene Name:	phosducin like
Database Link:	<a href="#">NP_005379</a> <a href="#">Entrez Gene 5082 Human</a> <a href="#">Q13371</a>
Background:	Phosducin-like proteins (PhLPs) are a conserved family of proteins with thioredoxin-like domains that were initially identified as modulators of G protein signaling (1,2). PDCL is widely expressed in normal human tissues and may participate directly in the regulation of calcium-evoked exocytosis in adrenal medullary chromaffin cells (3). It is an ethanol-responsive modulator of heterotrimeric G proteins (4).
Synonyms:	AR-JP; LPRS2; PDJ; PRKN



[View online »](#)

## Product images:



Western blot analysis of PDCL in K562 cell lysate with PDCL antibody at 1 ug/mL.