

Product datasheet for **TA349060**

SREBP2 (SREBF2) Rabbit Polyclonal Antibody

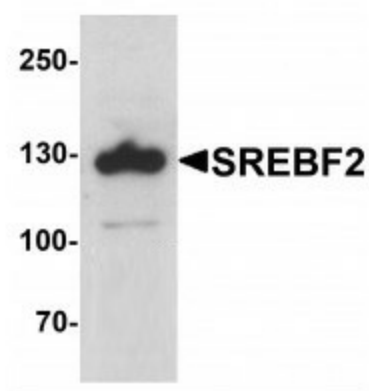
Product data:

Product Type:	Primary Antibodies
Applications:	IF, IHC, WB
Recommended Dilution:	WB: 1 - 2 ug/mL, IHC: 5 ug/mL, IF: 20 ug/mL
Reactivity:	Human, Mouse
Host:	Rabbit
Isotype:	IgG
Clonality:	Polyclonal
Immunogen:	SREBF2 antibody was raised against a 15 amino acid peptide near the center of human SREBF2.
Formulation:	PBS containing 0.02% sodium azide.
Concentration:	1 mg/ml
Purification:	SREBF2 antibody is affinity chromatography purified via peptide column.
Conjugation:	Unconjugated
Storage:	Store at -20°C as received.
Stability:	Stable for 12 months from date of receipt.
Predicted Protein Size:	Predicted: 126 kDa; Observed: 128 kDa
Gene Name:	sterol regulatory element binding transcription factor 2
Database Link:	NP_004590 Entrez Gene 6721 Human Q12772
Background:	The sterol regulatory element binding transcription factor 2 (SREBF2) is a transcription factor that binds to the sterol regulatory element-1 (SRE1), which is a decamer flanking the low density lipoprotein receptor gene and some genes involved in sterol biosynthesis (1,2). The related protein SREBF1 also binds SRE1 and activates transcription in an additive fashion to SREBF2 (2). SREBF2 has been more closely associated with cholesterol synthesis and accumulation, while the SREBF1 proteins are important in the regulation of genes involved in lipid metabolism (3).
Synonyms:	bHLHd1; SREBP-1c; SREBP1; SREBP1a

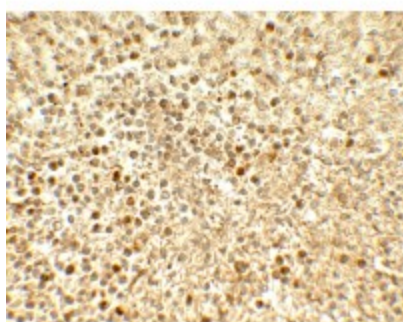


[View online »](#)

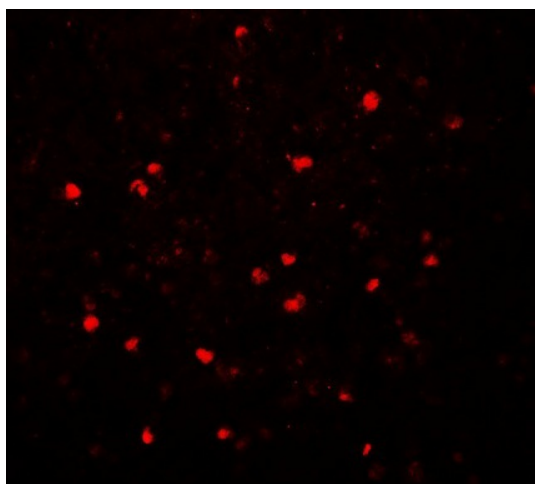
Product images:



Western blot analysis of SREBF2 in PC-3 cell lysate with SREBF1 antibody at 1 ug/mL.



Immunohistochemistry of SREBF2 in human spleen tissue with SREBF2 antibody at 5 ug/mL.



Immunofluorescence of SREBF2 in human spleen tissue with SREBF2 antibody at 20 ug/mL.