

Product datasheet for **TA349057**

Vinculin (VCL) Rabbit Polyclonal Antibody

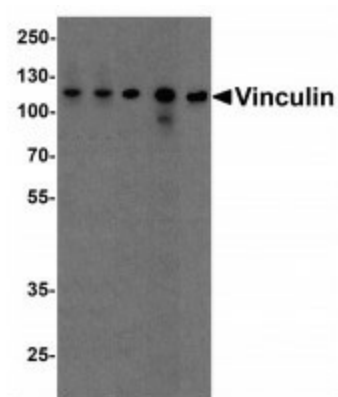
Product data:

| | |
|-------------------------|---|
| Product Type: | Primary Antibodies |
| Applications: | WB |
| Recommended Dilution: | WB: 0.5 - 1 ug/mL |
| Reactivity: | Human, Mouse, Rat |
| Host: | Rabbit |
| Isotype: | IgG |
| Clonality: | Polyclonal |
| Immunogen: | Vinculin antibody was raised against a 23 amino acid peptide near the center of human Vinculin. |
| Formulation: | PBS containing 0.02% sodium azide. |
| Concentration: | 1 mg/ml |
| Purification: | Vinculin antibody is affinity chromatography purified via peptide column. |
| Conjugation: | Unconjugated |
| Storage: | Store at -20°C as received. |
| Stability: | Stable for 12 months from date of receipt. |
| Predicted Protein Size: | Predicted: 120 kDa; Observed: 117 kDa |
| Gene Name: | vinculin |
| Database Link: | NP_003364 Entrez Gene 7414 Human P18206 |
| Background: | Vinculin is a cytoskeletal protein that plays an important role in the regulation of focal adhesions and embryonic development (1). Three structural vinculin domains include an amino-terminal head, a short flexible proline-rich region and a carboxy-terminal tail (2). Expression of vinculin were shown to be affected by the level of actin expression (2,3). Vinculin deficiencies are associated with a decrease in cell adhesion and an increase in cell motility, suggesting a possible role in metastatic growth (4). Defects in VCL are the cause of cardiomyopathy dilated type 1W (CMD1W) (5). |
| Synonyms: | DHTX; p63; VPS38 |



[View online »](#)

Product images:



Western blot analysis of Vinculin in A431, Daudi, Jurkat, Raji, and THP-1 cell lysate with Vinculin antibody at 1 ug/mL.