

Product datasheet for **TA349056**

WAPL Rabbit Polyclonal Antibody

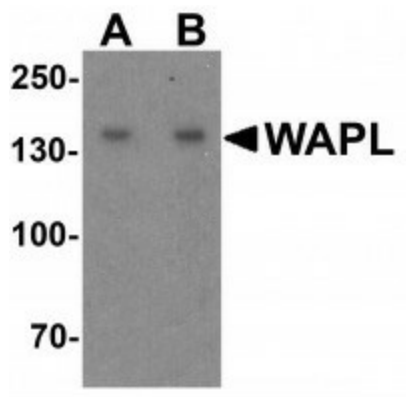
Product data:

Product Type:	Primary Antibodies
Applications:	IF, IHC, WB
Recommended Dilution:	WB: 1 - 2 ug/mL, IHC: 5 ug/mL, IF: 20 ug/mL
Reactivity:	Human, Mouse, Rat
Host:	Rabbit
Isotype:	IgG
Clonality:	Polyclonal
Immunogen:	WAPL antibody was raised against an 18 amino acid peptide near the amino terminus of human WAPL.
Formulation:	PBS containing 0.02% sodium azide.
Concentration:	1 mg/ml
Purification:	WAPL antibody is affinity chromatography purified via peptide column.
Conjugation:	Unconjugated
Storage:	Store at -20°C as received.
Stability:	Stable for 12 months from date of receipt.
Predicted Protein Size:	Predicted: 131 kDa; Observed: 140 kDa
Gene Name:	WAPL cohesin release factor
Database Link:	NP_055860 Entrez Gene 23063 Human Q7Z5K2
Background:	WAPL (wings apart-like), also known as WAPAL or FOE, is a 1,190 amino acid protein that contains one WAPL domain and may play an important role in cell growth (1). It is expressed in an isoform dependent manner in heart, skeletal muscle (isoform 2) and uterine cervix tumor tissue (isoform 1) (1,2,4). WAPL is involved in sister-chromatid adhesion and promotes release of cohesin from chromosomes by directly interacting with its regulatory subunits (3,4). WAPL is a new regulator of the development and metastasis of cancerous tissue (4,5).
Synonyms:	AOF2; BHC110; CPRF; KDM1; LSD1

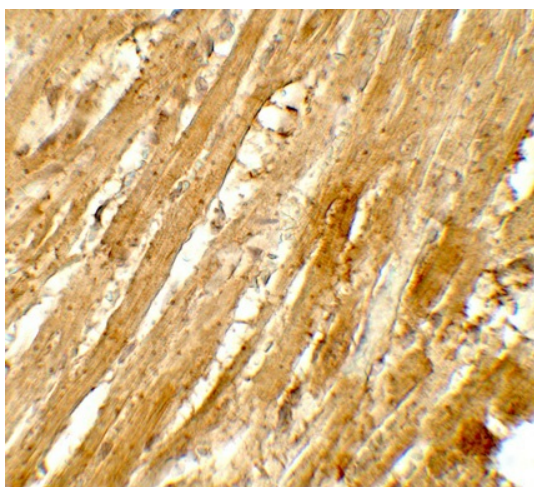


[View online »](#)

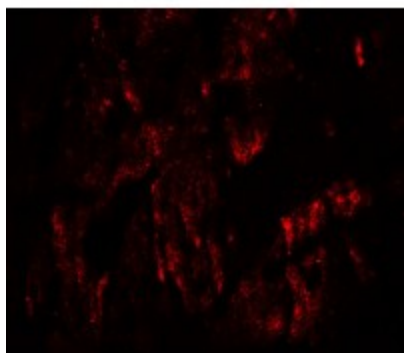
Product images:



Western blot analysis of WAPL in A20 cell lysate with WAPL antibody at (A) 1 and (B) 2 ug/mL.



Immunohistochemistry of WAPL in rat heart tissue with WAPL antibody at 5 ug/mL.



Immunofluorescence of WAPL in rat heart tissue with WAPL antibody at 20 ug/mL.