

## Product datasheet for **TA349055**

### Corticotropin Releasing Factor (CRH) Rabbit Polyclonal Antibody

#### Product data:

Product Type:	Primary Antibodies
Applications:	IF, IHC, WB
Recommended Dilution:	WB: 1 - 2 ug/mL, IHC: 5 ug/mL, IF: 20 ug/mL
Reactivity:	Human
Host:	Rabbit
Isotype:	IgG
Clonality:	Polyclonal
Immunogen:	CRH antibody was raised against a 16 amino acid peptide near the amino terminus of human CRH.
Formulation:	PBS containing 0.02% sodium azide.
Concentration:	1 mg/ml
Purification:	CRH antibody is affinity chromatography purified via peptide column.
Conjugation:	Unconjugated
Storage:	Store at -20°C as received.
Stability:	Stable for 12 months from date of receipt.
Predicted Protein Size:	Predicted: 22 kDa; Observed: 29 kDa
Gene Name:	corticotropin releasing hormone
Database Link:	<a href="#">NP_000747</a> <a href="#">Entrez Gene 1392 Human</a> <a href="#">P06850</a>

**Background:** Corticotropin-releasing hormone (CRH) is secreted by the paraventricular nucleus (PVN) of the hypothalamus in response to stress (1). In addition to production in the hypothalamus, this protein is also synthesized in peripheral tissues, such as T lymphocytes and is highly expressed in the placenta where it is a marker that determines the length of gestation and the timing of parturition and delivery. A rapid increase in circulating levels of the hormone occurs at the onset of parturition, suggesting that, in addition to its metabolic functions, this protein may act as a trigger for parturition (2). Marked reduction in this protein has been observed in association with Alzheimer disease (3).



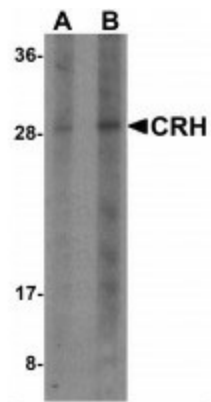
[View online »](#)

**Synonyms:** CRF; CRH1

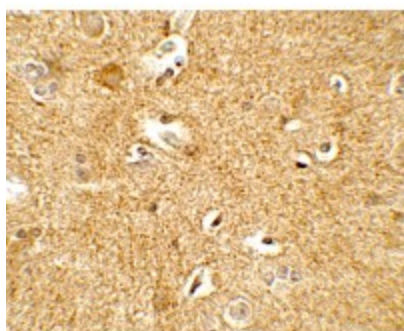
**Protein Families:** Druggable Genome, Secreted Protein

**Protein Pathways:** Long-term depression

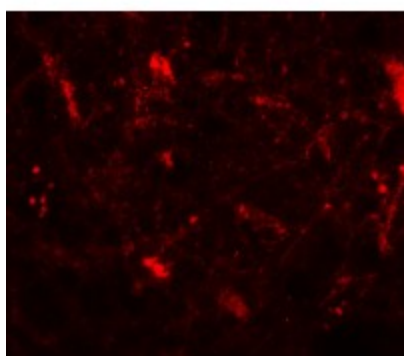
**Product images:**



Western blot analysis of CRH in human placenta tissue lysate with CRH antibody at (A) 1 and (B) 2 ug/mL.



Immunohistochemistry of CRH in human brain tissue with CRH antibody at 5 ug/mL.



Immunofluorescence of CRH in human brain tissue with CRH antibody at 20 ug/mL.