

Product datasheet for **TA349053**

PGC1 alpha (PPARGC1A) Rabbit Polyclonal Antibody

Product data:

| | |
|-------------------------|--|
| Product Type: | Primary Antibodies |
| Applications: | IF, IHC, WB |
| Recommended Dilution: | WB: 1 - 2 ug/mL, IHC: 5 ug/mL, IF: 20 ug/mL |
| Reactivity: | Human, Mouse, Rat |
| Host: | Rabbit |
| Isotype: | IgG |
| Clonality: | Polyclonal |
| Immunogen: | PPARGC1A antibody was raised against a 17 amino acid peptide near the amino terminus of human PPARGC1A. The immunogen is located within amino acids 200 - 250 of PPARGC1A. |
| Formulation: | PBS containing 0.02% sodium azide. |
| Concentration: | 1 mg/ml |
| Purification: | PPARGC1A antibody is affinity chromatography purified via peptide column. |
| Conjugation: | Unconjugated |
| Storage: | Store at -20°C as received. |
| Stability: | Stable for 12 months from date of receipt. |
| Predicted Protein Size: | Predicted: 88 kDa; Observed: 99 kDa |
| Gene Name: | PPARG coactivator 1 alpha |
| Database Link: | NP_037393 Entrez Gene 10891 Human Q9UBK2 |

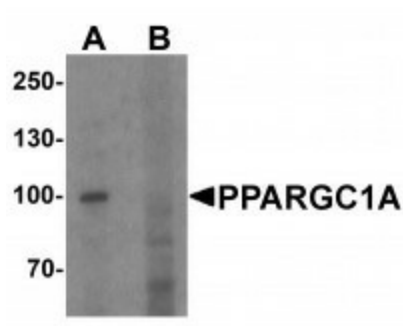
Background: The peroxisome proliferator-activated receptor gamma coactivator 1-alpha (PPARGC1A), also known as LEM-6, is a transcriptional coactivator that regulates the genes involved in energy metabolism (1). PPARGC1A interacts with PPARGgamma, which permits the interaction of PPARGC1A with multiple transcription factors. PPARGC1A can interact with, and regulate the activities of, cAMP response element binding protein (CREB) and nuclear respiratory factors (NRFs). It provides a direct link between external physiological stimuli and the regulation of mitochondrial biogenesis, and is a major factor that regulates muscle fiber type determination (2). PPARGC1A may be also involved in the development of obesity (3).



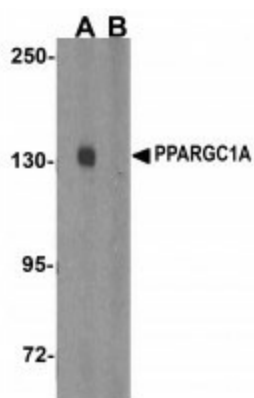
[View online »](#)

Synonyms: ARRDC6; EST01027; HHCPA78; THIF; VDUP1

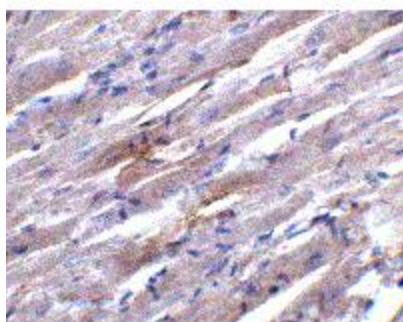
Product images:



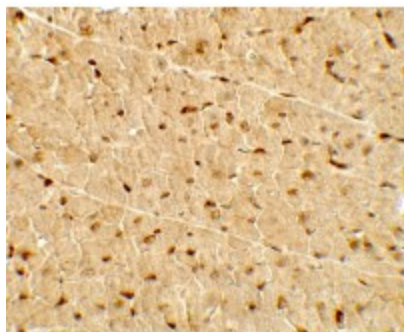
Western blot analysis of PPARGC1A in human heart tissue lysate with PPARGC1A antibody at 1ug/ml in (A) the absence and (B) the presence of blocking peptide.



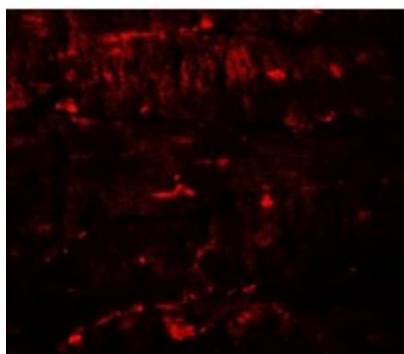
Western blot analysis of PPARGC1A in Human Skeletal Muscle tissue lysate with PPARGC1A antibody at 1ug/ml in (A) the absence and (B) the presence of blocking peptide.



Immunohistochemistry of PPARGC1A in rat heart tissue with PPARGC1A antibody at 5ug/ml.



Immunohistochemistry of PPARGC1A in rat heart tissue with PPARGC1A antibody at 5ug/ml.



Immunofluorescence of PPARGC1A in rat heart tissue with PPARGC1A antibody at 20ug/ml.