

## Product datasheet for **TA349052**

### FKBP12 (FKBP1A) Rabbit Polyclonal Antibody

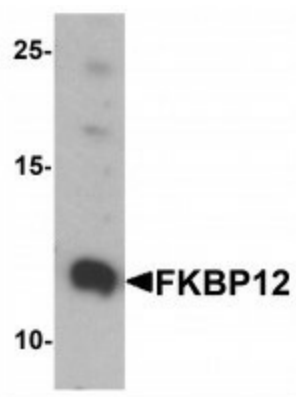
#### Product data:

Product Type:	Primary Antibodies
Applications:	IF, WB
Recommended Dilution:	WB: 1 - 2 ug/mL, IHC: 5 ug/mL, IF: 20 ug/mL
Reactivity:	Human, Mouse, Rat
Host:	Rabbit
Isotype:	IgG
Clonality:	Polyclonal
Immunogen:	FKBP12 antibody was raised against an 18 amino acid peptide near the center of human FKBP12.
Formulation:	PBS containing 0.02% sodium azide.
Concentration:	1 mg/ml
Purification:	FKBP12 antibody is affinity chromatography purified via peptide column.
Conjugation:	Unconjugated
Storage:	Store at -20°C as received.
Stability:	Stable for 12 months from date of receipt.
Predicted Protein Size:	Predicted: 12 kDa; Observed: 12 kDa
Gene Name:	FK506 binding protein 1A
Database Link:	<a href="#">NP_463460</a> <a href="#">Entrez Gene 2280 Human P62942</a>
Background:	FKBP, or FK506 binding protein, is a family of proteins that have prolyl isomerase activity and are related to the cyclophilins in function (1). FKBP12, also called FKBP1, was originally identified as a target of FK506 and rapamycin activity and catalyzes the transition between cis and transproline residues critical for proper folding of proteins (2). FKBP12 is an abundant, evolutionarily conserved cytoplasmic protein that is an important regulator of diverse array of cellular processes including T cell activation, entry into the cell cycle and intracellular calcium release (3-5).
Synonyms:	FKBP-1A; FKBP-12; FKBP1; FKBP12; PKC12; PKC12; PPIASE



[View online »](#)

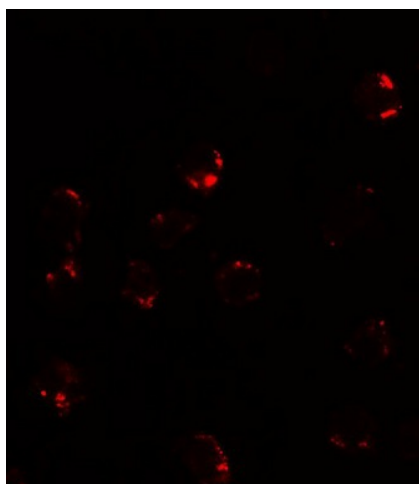
## Product images:



Western blot analysis of FKBP12 in A431 cell lysate with FKBP12 antibody at 1 ug/mL.



Immunocytochemistry of FKBP12 in A431 cells with FKBP12 antibody at 5 ug/mL.



Immunofluorescence of FKBP12 in A431 cells with FKBP12 antibody at 20 ug/mL.