

## Product datasheet for **TA349051**

### DEPTOR Rabbit Polyclonal Antibody

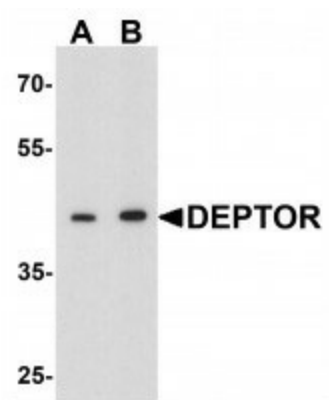
#### Product data:

Product Type:	Primary Antibodies
Applications:	IHC, WB
Recommended Dilution:	WB: 1 - 2 ug/mL, IHC: 5 ug/mL
Reactivity:	Human, Mouse, Rat
Host:	Rabbit
Isotype:	IgG
Clonality:	Polyclonal
Immunogen:	DEPTOR antibody was raised against a 16 amino acid peptide near the center of human DEPTOR.
Formulation:	PBS containing 0.02% sodium azide.
Concentration:	1 mg/ml
Purification:	DEPTOR antibody is affinity chromatography purified via peptide column.
Conjugation:	Unconjugated
Storage:	Store at -20°C as received.
Stability:	Stable for 12 months from date of receipt.
Predicted Protein Size:	Predicted: 45 kDa; Observed: 42 kDa
Gene Name:	DEP domain containing MTOR-interacting protein
Database Link:	<a href="#">NP_073620</a> <a href="#">Entrez Gene 64798 Human</a> <a href="#">Q8TB45</a>
Background:	DEPTOR is an mTOR (mammalian target of rapamycin)-interacting protein whose expression is negatively regulated by mTOR complex 1 (mTORC1) and mTORC2 (1). Loss of DEPTOR activates RP6SK1, Akt1, and SGK1, promotes cell growth and survival, and activates mTORC1 and mTORC2 kinase activities. DEPTOR expression is low in most cancers, but is often elevated in multiple myelomas (1). In response to stimulation by mitogens, DEPTOR is rapidly phosphorylated leading to its ubiquitination and degradation, allowing mTOR to generate an auto-amplification loop to promote its own full activation (2).
Synonyms:	DKFZp686F0270; MGC138150

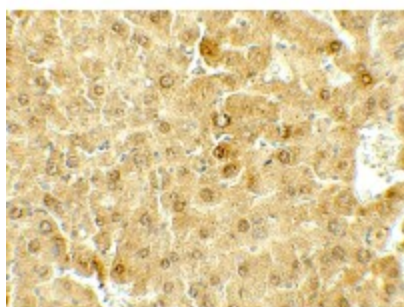


[View online »](#)

## Product images:



Western blot analysis of DEPTOR in mouse liver tissue lysate with DEPTOR antibody at (A) 1 and (B) 2  $\mu\text{g}/\text{mL}$ .



Immunohistochemistry of DEPTOR in mouse liver tissue with DEPTOR antibody at 5  $\mu\text{g}/\text{mL}$ .