

## Product datasheet for **TA349050**

### Calcium Sensing Receptor (CASR) Rabbit Polyclonal Antibody

#### Product data:

Product Type:	Primary Antibodies
Applications:	IF, IHC, WB
Recommended Dilution:	WB: 1 - 2 ug/mL, IHC: 5 ug/mL, IF: 20 ug/mL
Reactivity:	Human, Mouse, Rat
Host:	Rabbit
Isotype:	IgG
Clonality:	Polyclonal
Immunogen:	CASR antibody was raised against a 15 amino acid peptide near the amino terminus of human CASR.
Formulation:	PBS containing 0.02% sodium azide.
Concentration:	1 mg/ml
Purification:	CASR antibody is affinity chromatography purified via peptide column.
Conjugation:	Unconjugated
Storage:	Store at -20°C as received.
Stability:	Stable for 12 months from date of receipt.
Predicted Protein Size:	Predicted: 101, 120 kDa; Observed: 115, 125 kDa
Gene Name:	calcium sensing receptor
Database Link:	<a href="#">NP_001171536</a> <a href="#">Entrez Gene 846 Human</a> <a href="#">P41180</a>



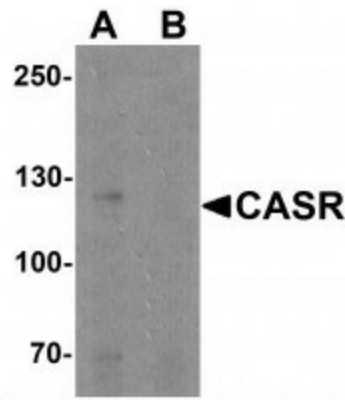
[View online »](#)

**Background:**

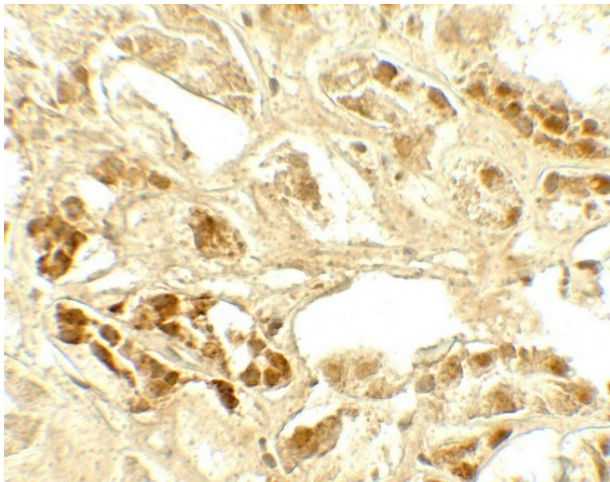
The calcium-sensing receptor protein (CASR) is a G protein-coupled receptor that is expressed in the parathyroid hormone (PTH)-producing chief cells of the parathyroid gland, and the cells lining the kidney tubule (1). It senses small changes in circulating calcium concentration and couples this information to intracellular signaling pathways that modify PTH secretion or renal cation handling, thus this protein plays an essential role in maintaining mineral ion homeostasis (1). Mutations in this gene cause familial hypocalciuric hypercalcemia, familial, isolated hypoparathyroidism, and neonatal severe primary hyperparathyroidism (1,2). Recent evidence suggests that activated CASR contributes to the cytokine secretion through the partial MAPK and NF-kappaB pathways in T cells (3).

**Synonyms:**

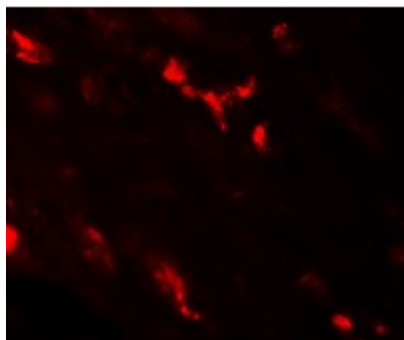
CAR; EIG8; FHH; FIH; GPRC2A; HHC; HHC1; HYPOC1; NSHPT; PCAR1

**Product images:**

Western blot analysis of CASR in EL4 cell lysate with CASR antibody at 1 ug/mL in (A) the absence and (B) the presence of blocking peptide.



Immunohistochemistry of CASR in human kidney tissue with CASR antibody at 5 ug/mL.



Immunofluorescence of CASR in human kidney tissue with CASR antibody at 20 ug/mL.