

Product datasheet for **TA349048**

MIB1 Rabbit Polyclonal Antibody

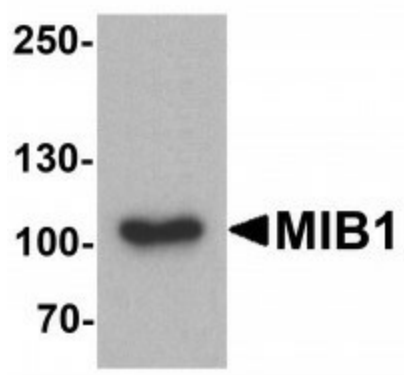
Product data:

Product Type:	Primary Antibodies
Applications:	IF, WB
Recommended Dilution:	WB: 1 - 2 ug/mL, IHC: 5 ug/mL, IF: 20 ug/mL
Reactivity:	Human, Mouse, Rat
Host:	Rabbit
Isotype:	IgG
Clonality:	Polyclonal
Immunogen:	MIB1 antibody was raised against a 19 amino acid peptide near the carboxy terminus of human MIB1.
Formulation:	PBS containing 0.02% sodium azide.
Concentration:	1 mg/ml
Purification:	MIB1 antibody is affinity chromatography purified via peptide column.
Conjugation:	Unconjugated
Storage:	Store at -20°C as received.
Stability:	Stable for 12 months from date of receipt.
Predicted Protein Size:	Predicted: 89, 102, 111 kDa; Observed: 103 kDa
Gene Name:	mindbomb E3 ubiquitin protein ligase 1
Database Link:	NP_065825 Entrez Gene 57534 Human Q86YT6
Background:	The E3 ubiquitin-protein ligase MIB1, also known as Mindbomb homolog 1, contains multiple ankyrin repeats and RING finger domains that functions as an E3 ubiquitin ligase (1). MIB1 interacts with and regulates the cellular expression of the death-associated protein kinase 1 (DAPK1) protein by promoting its ubiquitination and degradation (1). It also positively regulates Notch signaling by ubiquitinating the Notch receptors, thereby facilitating their endocytosis (2).
Synonyms:	KIAA1625



[View online »](#)

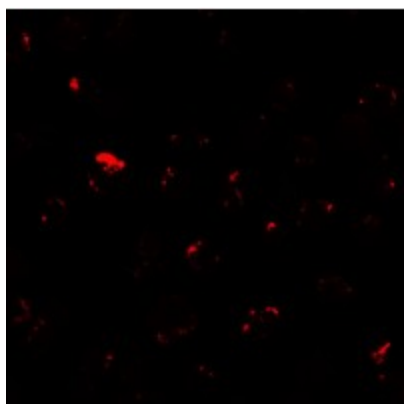
Product images:



Western blot analysis of MIB1 in A431 cell lysate with MIB1 antibody at 1 ug/mL.



Immunocytochemistry of MIB1 in A431 cells with MIB1 antibody at 5 ug/mL.



Immunofluorescence of MIB1 in A431 cells with MIB1 antibody at 20 ug/mL.