

## Product datasheet for **TA349045**

### SMURF 2 (SMURF2) Rabbit Polyclonal Antibody

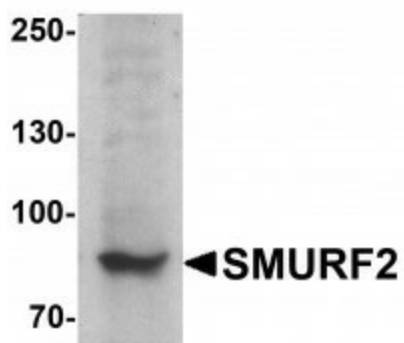
#### Product data:

Product Type:	Primary Antibodies
Applications:	IF, IHC, WB
Recommended Dilution:	WB: 1 - 2 ug/mL, IHC: 5 ug/mL, IF: 20 ug/mL
Reactivity:	Human, Mouse, Rat
Host:	Rabbit
Isotype:	IgG
Clonality:	Polyclonal
Immunogen:	SMURF2 antibody was raised against a 17 amino acid peptide near the amino terminus of human SMURF2. The immunogen is located within amino acids 140 - 190 of SMURF2.
Formulation:	PBS containing 0.02% sodium azide.
Concentration:	1 mg/ml
Purification:	SMURF2 antibody is affinity chromatography purified via peptide column.
Conjugation:	Unconjugated
Storage:	Store at -20°C as received.
Stability:	Stable for 12 months from date of receipt.
Predicted Protein Size:	Predicted: 82 kDa; Observed: 85 kDa
Gene Name:	SMAD specific E3 ubiquitin protein ligase 2
Database Link:	<a href="#">NP_073576</a> <a href="#">Entrez Gene 64750 Human</a> <a href="#">Q9HAU4</a>
Background:	SMURF2 (SMAD ubiquitin regulatory factor 2) is a negative regulator of TGF-beta signaling (1). SMURF1 and SMURF2 are members of HECT domain E3 ubiquitin ligase which are involved in the enzymatic reactions of the Ub conjugating pathway (1,2). SMURF2 is widely expressed and was initially identified as an inhibitor of TGF-beta/BMP signaling by targeting R-Smads and TGF type I receptor for ubiquitination and degradation (3). Studies have shown that SMURF2 functions as a tumor suppressor by maintaining genomic stability through targeting RNF20 (3). SMURF2 associates constitutively with SMAD7 (4).
Synonyms:	VUR3

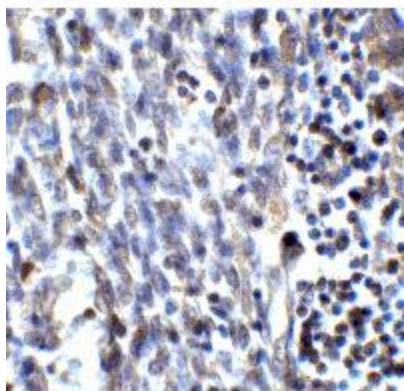


[View online »](#)

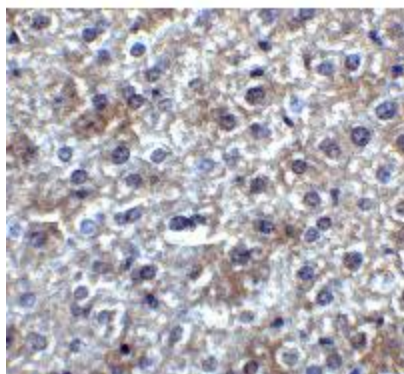
## Product images:



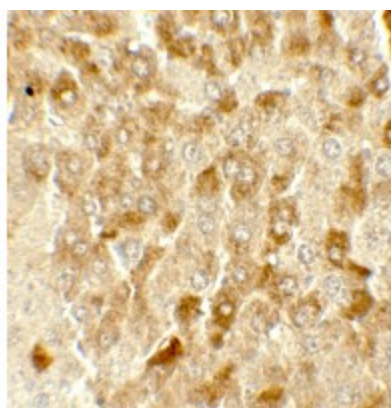
Western blot analysis of SMURF2 in C2C12 cell lysate with SMURF2 antibody at 1ug/ml.



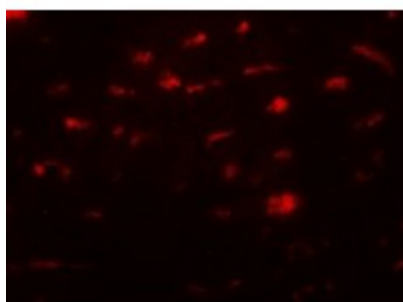
Immunohistochemistry of SMURF2 in human uterus tissue with SMURF2 antibody at 2ug/ml.



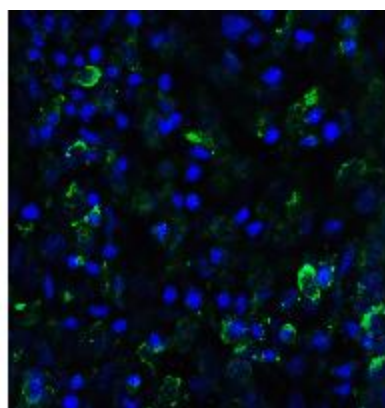
Immunohistochemistry of SMURF2 in mouse liver tissue with SMURF2 antibody at 2ug/ml.



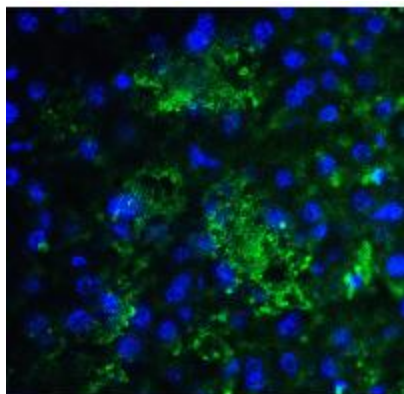
Immunohistochemistry of SMURF2 in mouse liver tissue with SMURF2 antibody at 5ug/ml.



Immunofluorescence of SMURF2 in mouse liver tissue with SMURF2 antibody at 20ug/ml.



Immunofluorescence of SMURF2 in human uterus tissue with SMURF2 antibody at 20ug/ml.



Immunofluorescence of SMURF2 in mouse liver tissue with SMURF2 antibody at 20ug/ml.