

## Product datasheet for **TA349034**

### TOPAZ1 Rabbit Polyclonal Antibody

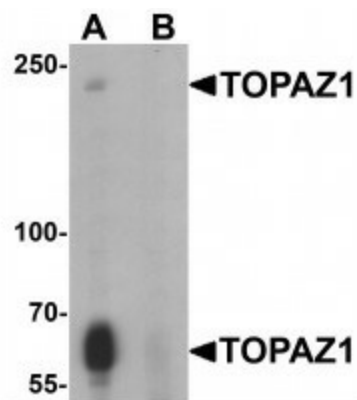
#### Product data:

Product Type:	Primary Antibodies
Applications:	IF, IHC, WB
Recommended Dilution:	WB: 1 - 2 ug/mL, IHC: 5 ug/mL, IF: 20 ug/mL
Reactivity:	Human, Mouse, Rat
Host:	Rabbit
Isotype:	IgG
Clonality:	Polyclonal
Immunogen:	TOPAZ1 antibody was raised against a 19 amino acid peptide near the carboxy terminus of human TOPAZ1.
Formulation:	PBS containing 0.02% sodium azide.
Concentration:	1 mg/ml
Purification:	TOPAZ1 antibody is affinity chromatography purified via peptide column.
Conjugation:	Unconjugated
Storage:	Store at -20°C as received.
Stability:	Stable for 12 months from date of receipt.
Predicted Protein Size:	Predicted: 65, 186 kDa; Observed: 60, 240 kDa
Gene Name:	testis and ovary specific PAZ domain containing 1
Database Link:	<a href="#">NP_001138502</a> <a href="#">Entrez Gene 375337 Human</a> <a href="#">Q8N9V7</a>
Background:	The testis and ovary specific PAZ domain containing 1 (TOPAZ1) protein is a highly conserved protein that is highly expressed in the gonads during germ cell meiosis, suggesting that it may play a role in germ cell development (1). It contains a PAZ domain and a zinc finger domain and is exclusively expressed in adult testis and fetal ovary.
Synonyms:	IZUMO; OBF

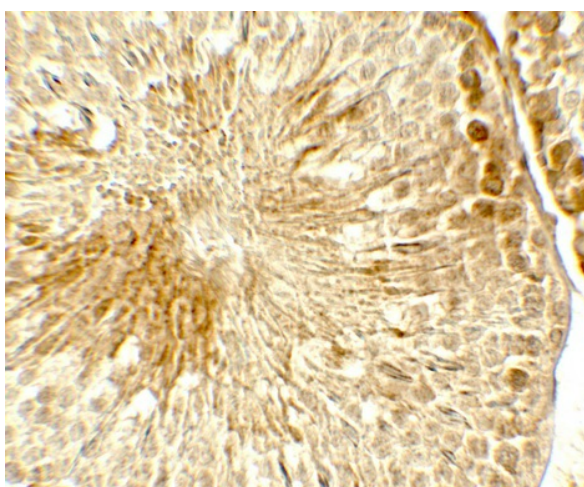


[View online »](#)

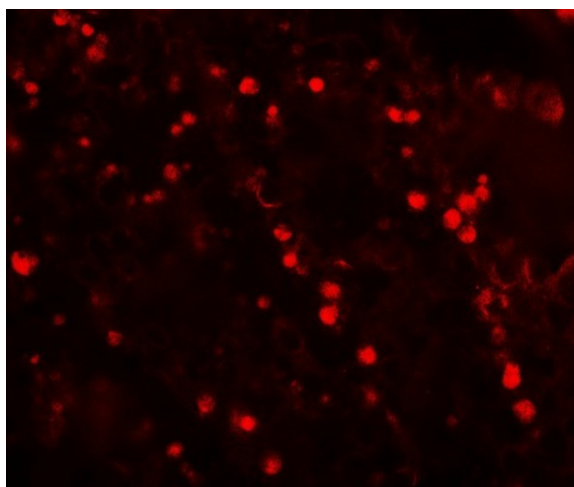
## Product images:



Western blot analysis of TOPAZ1 in human testis tissue lysate with TOPAZ1 antibody at 1  $\mu\text{g}/\text{mL}$  in (A) the absence and (B) the presence of blocking peptide.



Immunohistochemistry of TOPAZ1 in rat testis tissue with TOPAZ1 antibody at 5  $\mu\text{g}/\text{mL}$ .



Immunofluorescence of TOPAZ1 in rat testis tissue with TOPAZ1 antibody at 20  $\mu\text{g}/\text{mL}$ .