

## Product datasheet for **TA349033**

### TET1 Rabbit Polyclonal Antibody

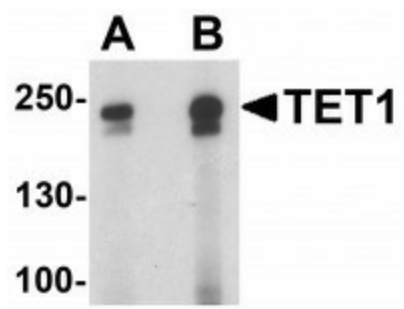
#### Product data:

Product Type:	Primary Antibodies
Applications:	IF, IHC, WB
Recommended Dilution:	WB: 1 - 2 ug/mL, IHC: 5 ug/mL, IF: 20 ug/mL
Reactivity:	Human, Mouse, Rat
Host:	Rabbit
Isotype:	IgG
Clonality:	Polyclonal
Immunogen:	TET1 antibody was raised against an 18 amino acid peptide near the carboxy terminus of human TET1. The immunogen is located within amino acids 2030 - 2080 of TET1.
Formulation:	PBS containing 0.02% sodium azide.
Concentration:	1 mg/ml
Purification:	TET1 antibody is affinity chromatography purified via peptide column.
Conjugation:	Unconjugated
Storage:	Store at -20°C as received.
Stability:	Stable for 12 months from date of receipt.
Predicted Protein Size:	Predicted: 235 kDa; Observed: 240 kDa
Gene Name:	tet methylcytosine dioxygenase 1
Database Link:	<a href="#">NP_085128</a> <a href="#">Entrez Gene 52463 Mouse</a> <a href="#">Entrez Gene 309902 Rat</a> <a href="#">Entrez Gene 80312 Human</a> <a href="#">Q8NFU7</a>
Background:	TET1, a member of the ten-eleven-translocation (TET) family of genes, was initially discovered as a fusion partner of MLL in acute myeloid leukemias containing the t(10;11)(q22;q23) (1). It is a methylcytosine dioxygenase that catalyzes the conversion of methylcytosine to 5-hydroxymethylcytosine (2). TET1 expression is regulated during inflammation in both THP-1 and primary dendritic cells, and is a negative transcriptional regulator of IL-1beta following and inflammatory stimulus (3). Recent evidence has shown that TET1 is part of a signaling pathway that regulates breast cancer growth and metastasis (4).
Synonyms:	bA119F7.1; CXXC6; LCX

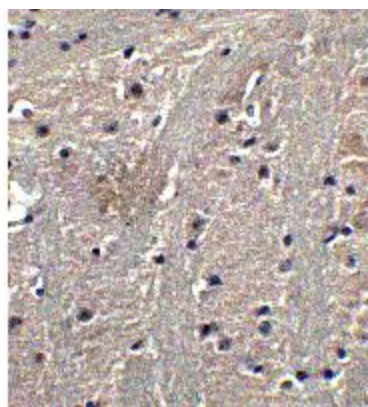


[View online »](#)

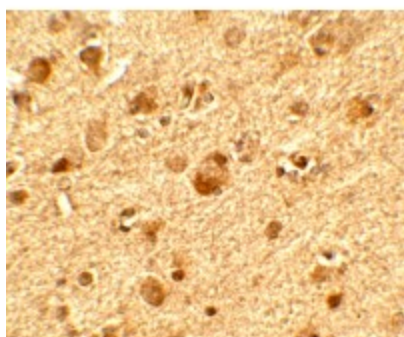
## Product images:



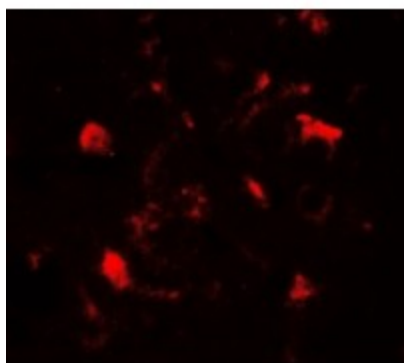
Western blot analysis of TET1 in rat brain tissue lysate with TET1 antibody at (A) 1 and (B) 2ug/ml.



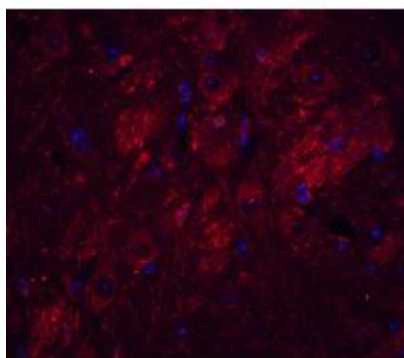
Immunocytochemistry of TET1 in mouse brain tissue with TET1 antibody at 5ug/ml.



Immunohistochemistry of TET1 in human brain tissue with TET1 antibody at 5ug/ml.



Immunofluorescence of TET1 in human brain tissue with TET1 antibody at 20ug/ml.



Immunofluorescence of TET1 in mouse brain tissue with TET1 antibody at 20ug/ml.