

Product datasheet for **TA349032**

TET2 Rabbit Polyclonal Antibody

Product data:

Product Type:	Primary Antibodies
Applications:	WB
Recommended Dilution:	WB: 1 - 2 ug/mL
Reactivity:	Human, Mouse
Host:	Rabbit
Isotype:	IgG
Clonality:	Polyclonal
Immunogen:	TET2 antibody was raised against an 18 amino acid peptide near the carboxy terminus of human TET2.
Formulation:	PBS containing 0.02% sodium azide.
Concentration:	1 mg/ml
Purification:	TET2 antibody is affinity chromatography purified via peptide column.
Conjugation:	Unconjugated
Storage:	Store at -20°C as received.
Stability:	Stable for 12 months from date of receipt.
Predicted Protein Size:	Predicted: 220 kDa; Observed: 220 kDa
Gene Name:	tet methylcytosine dioxygenase 2
Database Link:	NP_001120680 Entrez Gene 54790 Human Q6N021

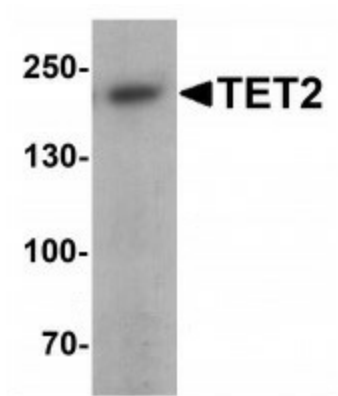
Background: TET2, a member of the ten-eleven-translocation (TET) family of genes, is a methylcytosine dioxygenase that catalyzes the conversion of methylcytosine to 5-hydroxymethylcytosine. It is a candidate tumor suppressor gene reported to be mutated in approximately 14% of patients with JAK2V617F-positive myeloproliferative neoplasms (1), and can be mutated in other hematopoietic disorders such as myelodysplastic syndromes, acute myeloid leukemia, and chronic myelomonocytic leukemia (2). Analysis of the TET2 and JAK2 mutations in these neoplasms suggests that mutations in TET2 do not represent a predisposition for acquiring mutations in JAK2.



[View online »](#)

Synonyms: HLTRS; HLTS

Product images:



Western blot analysis of TET2 in 3T3 cell lysate with TET2 antibody at 1 ug/mL.