

Product datasheet for **TA349031**

TRIM21 Rabbit Polyclonal Antibody

Product data:

Product Type:	Primary Antibodies
Applications:	IF, IHC, WB
Recommended Dilution:	WB: 0.5 - 1 ug/mL, IHC: 5 ug/mL, IF: 20 ug/mL
Reactivity:	Human
Host:	Rabbit
Isotype:	IgG
Clonality:	Polyclonal
Immunogen:	TRIM21 antibody was raised against an 16 amino acid peptide near the center of human TRIM21.
Formulation:	PBS containing 0.02% sodium azide.
Concentration:	1 mg/ml
Purification:	TRIM21 antibody is affinity chromatography purified via peptide column.
Conjugation:	Unconjugated
Storage:	Store at -20°C as received.
Stability:	Stable for 12 months from date of receipt.
Predicted Protein Size:	Predicted: 52 kDa; Observed: 52 kDa
Gene Name:	tripartite motif containing 21
Database Link:	NP_003132 Entrez Gene 6737 Human P19474

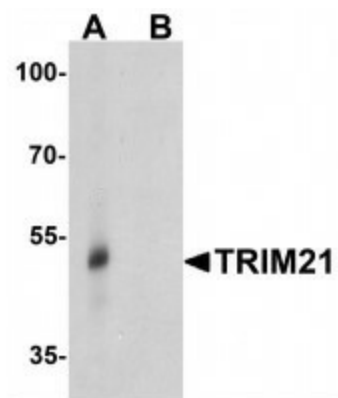
Background: TRIM21, a member of the tripartite motif (TRIM) family, is a part of the RoSSA ribonucleoprotein, which includes a single polypeptide and one of four small RNA molecules. The RoSSA particle localizes to both the cytoplasm and the nucleus (1). RoSSA interacts with autoantigens in patients with Sjogren syndrome and systemic lupus erythematosus (2). TRIM21 also acts as a cytosolic antibody receptor; detection of intracellular antibodies activate immune signaling by stimulating the transcription factor pathways of NF-kappaB, AP-1, IRF3, IRF5, and IRF7, resulting in the production of proinflammatory cytokines and the induction of an antiviral state (3).



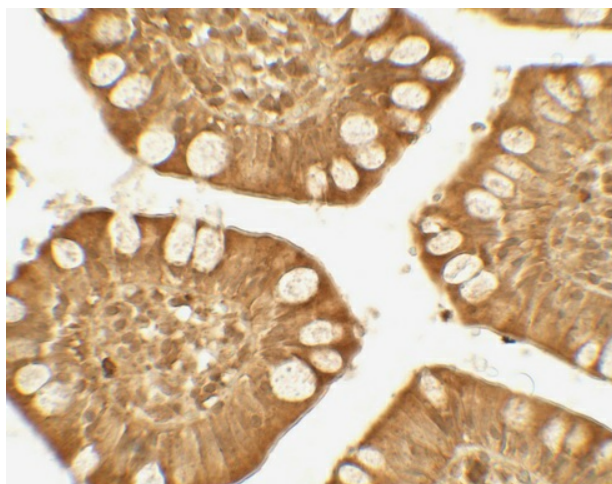
[View online »](#)

Synonyms: bHLHd2; SREBP-2; SREBP2

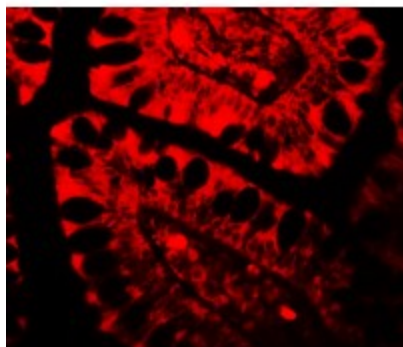
Product images:



Western blot analysis of TRIM21 in human lung tissue lysate with TRIM21 antibody at 0.5 ug/mL in (A) the absence and (B) the presence of blocking peptide.



Immunohistochemistry of TRIM21 in human small intestine tissue with TRIM21 antibody at 5 ug/mL.



Immunofluorescence of TRIM21 in human small intestine tissue with TRIM21 antibody at 20 ug/mL.