

## Product datasheet for **TA349030**

### TRF2 (TERF2) Rabbit Polyclonal Antibody

#### Product data:

Product Type:	Primary Antibodies
Applications:	IHC, WB
Recommended Dilution:	WB: 1 - 2 ug/mL, IHC: 5 ug/mL
Reactivity:	Human
Host:	Rabbit
Isotype:	IgG
Clonality:	Polyclonal
Immunogen:	TERF2 antibody was raised against a 17 amino acid peptide near the amino terminus of human TERF2.
Formulation:	PBS containing 0.02% sodium azide.
Concentration:	1 mg/ml
Purification:	TERF2 antibody is affinity chromatography purified via peptide column.
Conjugation:	Unconjugated
Storage:	Store at -20°C as received.
Stability:	Stable for 12 months from date of receipt.
Predicted Protein Size:	Predicted: 60 kDa; Observed: 69 kDa
Gene Name:	telomeric repeat binding factor 2
Database Link:	<a href="#">NP_005643</a> <a href="#">Entrez Gene 7014 Human</a> <a href="#">Q15554</a>

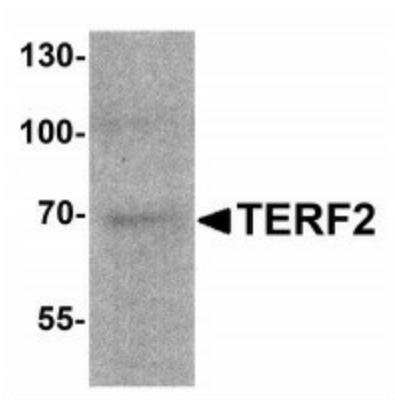
**Background:** The telomeric repeat binding factor family (TERF1 and TERF2) plays a key role in cellular immortalization and cellular senescence (1). TERF2, as a component of the telomere nucleoprotein complex, is present at telomeres in metaphase of the cell cycle (2). TERF2 is a second negative regulator of telomere length and binds as a dimer to TTAGGG repeats at ends of chromosomes (telomeres), where it blocks inappropriate activation of the ATM/p53 pathway (2,3). TERF1 negatively regulates telomere elongation, while TERF2 protects the chromosome ends by inhibiting end-to-end fusions. Down-regulation of TRF expression in tumor cells may contribute to cell immortalization and malignant progression (4,5).



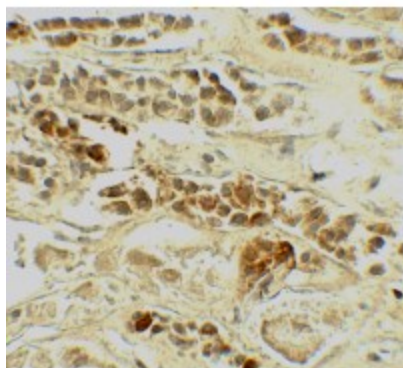
[View online »](#)

Synonyms: AD-004; CGI-137; CINAP; CIP; hCINAP

### Product images:



Western blot analysis of TERF2 in 293 cell lysate with TERF2 antibody at 1 ug/mL.



Immunohistochemistry of TERF2 in human kidney tissue with TERF2 antibody at 5 ug/mL.