

Product datasheet for **TA349027**

ME1 Rabbit Polyclonal Antibody

Product data:

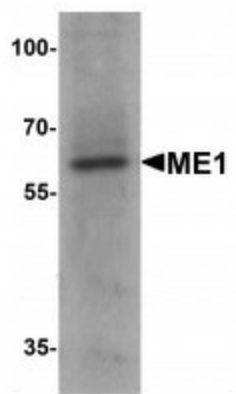
Product Type:	Primary Antibodies
Applications:	IHC, WB
Recommended Dilution:	WB: 1 - 2 ug/mL, IHC: 5 ug/mL
Reactivity:	Human, Mouse, Rat
Host:	Rabbit
Isotype:	IgG
Clonality:	Polyclonal
Immunogen:	ME1 antibody was raised against a 16 amino acid peptide near the amino terminus of human ME1.
Formulation:	PBS containing 0.02% sodium azide.
Concentration:	1 mg/ml
Purification:	ME1 antibody is affinity chromatography purified via peptide column.
Conjugation:	Unconjugated
Storage:	Store at -20°C as received.
Stability:	Stable for 12 months from date of receipt.
Predicted Protein Size:	Predicted: 63 kDa; Observed: 63 kDa
Gene Name:	malic enzyme 1
Database Link:	NP_002386 Entrez Gene 17436 MouseEntrez Gene 24552 RatEntrez Gene 4199 Human P48163
Background:	ME1, also known as NADP-ME, MES or HUMNDME, may play an important role as a housekeeping protein within the cell (1). ME1 is a 572 amino acid cytoplasmic protein that belongs to the malic enzyme family (2). It is expressed ubiquitously with highest expression in liver and white adipose tissue. ME1 functions as an NADP-dependent enzyme that generates NADPH for fatty acid biosynthesis (3). The activity of this enzyme, the reversible oxidative decarboxylation of malate, links the glycolytic and citric acid cycles (3,4). ME1 is regulated by both thyroid hormone levels and the amount of carbohydrates in the diet (5).
Synonyms:	HUMNDME; MES



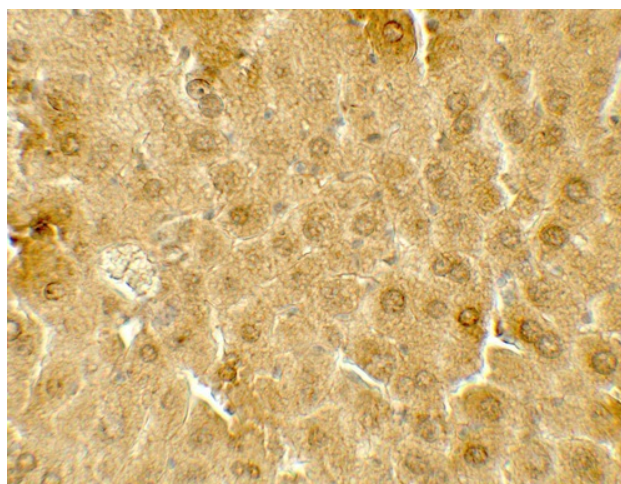
[View online »](#)

Protein Pathways: Metabolic pathways, PPAR signaling pathway, Pyruvate metabolism

Product images:



Western blot analysis of ME1 in 293 cell lysate with ME1 antibody at 1 ug/mL.



Immunohistochemistry of ME1 in mouse liver tissue with ME1 antibody at 5 ug/mL.