

Product datasheet for **TA349023**

MAP2K1IP1 (LAMTOR3) Rabbit Polyclonal Antibody

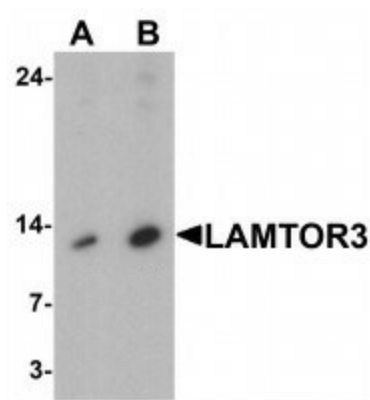
Product data:

Product Type:	Primary Antibodies
Applications:	IF, IHC, WB
Recommended Dilution:	WB: 1 - 2 ug/mL, IHC: 5 ug/mL, IF: 20 ug/mL
Reactivity:	Human, Mouse, Rat
Host:	Rabbit
Isotype:	IgG
Clonality:	Polyclonal
Immunogen:	LAMTOR3 antibody was raised against an 15 amino acid peptide near the center of human LAMTOR3.
Formulation:	PBS containing 0.02% sodium azide.
Concentration:	1 mg/ml
Purification:	LAMTOR3 antibody is affinity chromatography purified via peptide column.
Conjugation:	Unconjugated
Storage:	Store at -20°C as received.
Stability:	Stable for 12 months from date of receipt.
Predicted Protein Size:	Predicted: 14 kDa; Observed: 13 kDa
Gene Name:	late endosomal/lysosomal adaptor, MAPK and MTOR activator 3
Database Link:	NP_068805 Entrez Gene 8649 Human Q9UHA4
Background:	The late endosomal/lysosomal adaptor MAPK and MTOR activator 3 (LAMTOR3) protein belongs to the LAMTOR family of proteins, and together with LAMTOR2 and the MAPK1 and ERK kinase 1 (MEK1) localizes to late endosomes where it is required for the efficient activation of ERK signaling (1,2). This complex is involved in the regulation of late endosomal traffic and cellular proliferation (3) and plays a role in cellular host defense against Salmonella infection (4).
Synonyms:	OASLd; p59 OASL; p59-OASL; p59OASL; TRIP-14; TRIP14

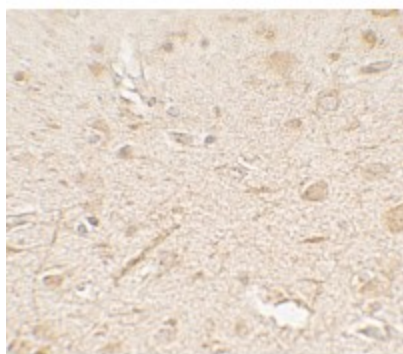


[View online »](#)

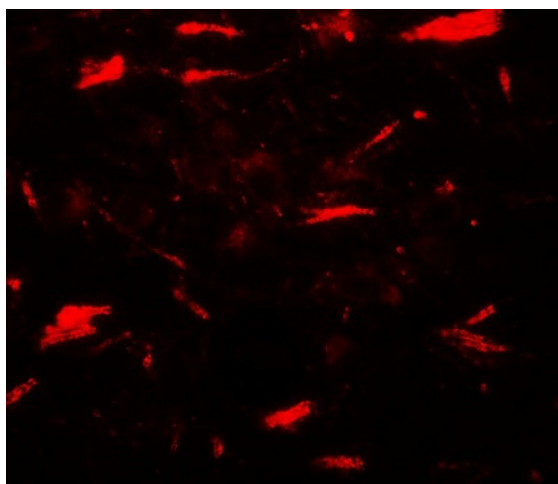
Product images:



Western blot analysis of LAMTOR3 in human brain tissue lysate with LAMTOR3 antibody at (A) 1 and (B) 2 ug/mL



Immunohistochemistry of LAMTOR3 in human brain tissue with LAMTOR3 antibody at 5 ug/mL.



Immunofluorescence of LAMTOR3 in human brain tissue with LAMTOR3 antibody at 20 ug/mL.