

Product datasheet for **TA349022**

robld3 (LAMTOR2) Rabbit Polyclonal Antibody

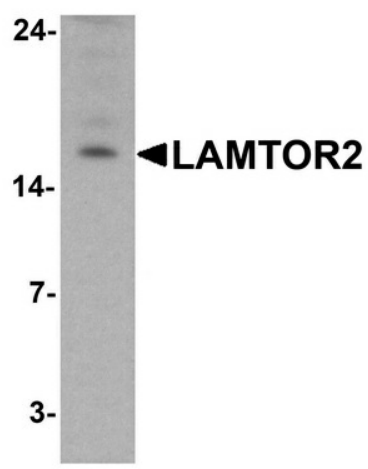
Product data:

Product Type:	Primary Antibodies
Applications:	IF, IHC, WB
Recommended Dilution:	WB: 1 - 2 ug/mL, IHC: 5 ug/mL, IF: 20 ug/mL
Reactivity:	Human, Mouse, Rat
Host:	Rabbit
Isotype:	IgG
Clonality:	Polyclonal
Immunogen:	LAMTOR2 antibody was raised against an 18 amino acid peptide near the center of human LAMTOR2.
Formulation:	PBS containing 0.02% sodium azide.
Concentration:	1 mg/ml
Purification:	LAMTOR2 antibody is affinity chromatography purified via peptide column.
Conjugation:	Unconjugated
Storage:	Store at -20°C as received.
Stability:	Stable for 12 months from date of receipt.
Predicted Protein Size:	Predicted: 14 kDa; Observed: 16 kDa
Gene Name:	late endosomal/lysosomal adaptor, MAPK and MTOR activator 2
Database Link:	NP_054736 Entrez Gene 28956 Human Q9Y2Q5
Background:	The late endosomal/lysosomal adaptor MAPK and MTOR activator 2 (LAMTOR2) protein belongs to the LAMTOR family of proteins, and together with LAMTOR3 and the MAPK1 and ERK kinase 1 (MEK1) localizes to late endosomes where it is required for the efficient activation of ERK signaling (1,2). This complex is involved in the regulation of late endosomal traffic and cellular proliferation (3) and plays a role in cellular host defense against Salmonella infection (4).
Synonyms:	ANG-5; ANGPT5; ANL3; FHBL2

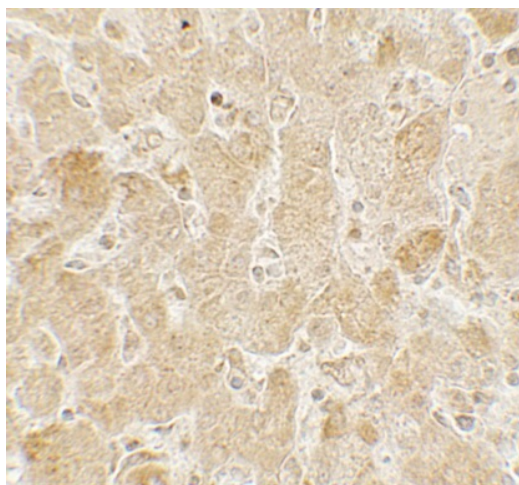


[View online »](#)

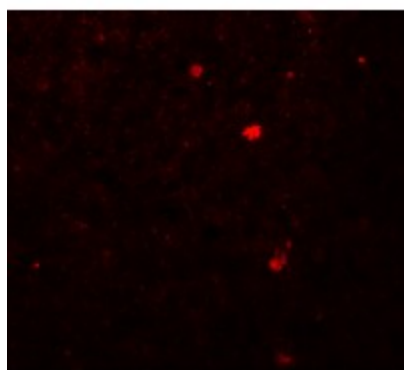
Product images:



Western blot analysis of LAMTOR2 in HepG2 cell lysate with LAMTOR2 antibody at 1 ug/mL.



Immunohistochemistry of LAMTOR2 in human spleen tissue with LAMTOR2 antibody at 5 ug/mL.



Immunofluorescence of LAMTOR2 in human spleen tissue with LAMTOR2 antibody at 20 ug/mL.