

Product datasheet for **TA349021**

alpha Tubulin (TUBA3C) Rabbit Polyclonal Antibody

Product data:

Product Type:	Primary Antibodies
Applications:	IF, IHC, WB
Recommended Dilution:	WB: 0.25 - 0.5 ug/mL, IHC: 5 ug/mL, IF: 20 ug/mL
Reactivity:	Human, Mouse, Rat
Host:	Rabbit
Isotype:	IgG
Clonality:	Polyclonal
Immunogen:	Alpha-tubulin antibody was raised against an 18 amino acid peptide near the amino terminus of human alpha-tubulin
Formulation:	PBS containing 0.02% sodium azide.
Concentration:	1 mg/ml
Purification:	Alpha-tubulin antibody is affinity chromatography purified via peptide column.
Conjugation:	Unconjugated
Storage:	Store at -20°C as received.
Stability:	Stable for 12 months from date of receipt.
Predicted Protein Size:	Predicted: 50 kDa; Observed: 45 kDa
Gene Name:	tubulin alpha 3c
Database Link:	NP_005992 Entrez Gene 7278 Human Q13748



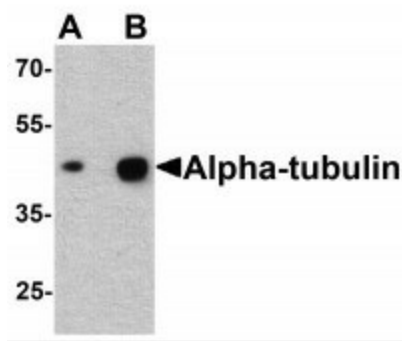
[View online »](#)

Background:

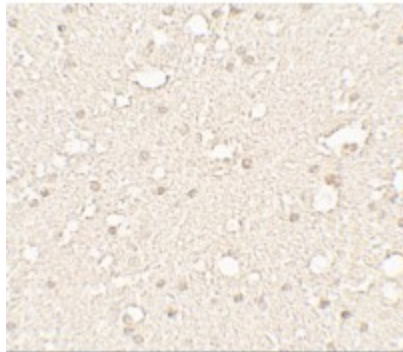
Alpha-tubulin belongs to the tubulin superfamily, which is composed of six distinct families. Along with beta-tubulins, alpha-tubulins are the major components of microtubules. These microtubules are involved in a wide variety of cellular activities ranging from mitosis and transport events to cell movement and the maintenance of cell shape. Alpha- and beta-tubulin dimers are assembled to 13 protofilaments that form a microtubule of 22-nm diameter (reviewed in 1). Tyrosine ligase adds a C-terminal tyrosine to monomeric alpha-tubulin. Assembled microtubules can again be detyrosinated by a cytoskeleton-associated carboxypeptidase (2). Another post-translational modification of detyrosinated alpha-tubulin is C-terminal polyglutamylation, which is characteristic of microtubules in neuronal cells and the mitotic spindle (3). Like GAPDH and β -Actin, this antibody makes an excellent loading control in immunoblots.

Synonyms:

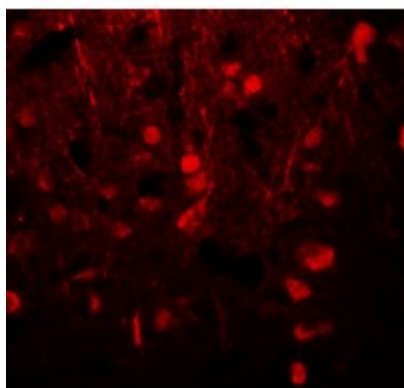
SCA41; TRP3

Product images:

Western blot analysis of alpha-tubulin in human brain tissue lysate with alpha-tubulin antibody at (A) 0.25 and (B) 0.5 ug/mL.



Immunohistochemistry of Alpha-tubulin in human brain tissue with Alpha-tubulin antibody at 5 ug/mL.



Immunofluorescence of Alpha-tubulin in human brain tissue with Alpha-tubulin antibody at 20 ug/mL.