

Product datasheet for **TA349020**

IL12A Rabbit Polyclonal Antibody

Product data:

Product Type:	Primary Antibodies
Applications:	IF, IHC, WB
Recommended Dilution:	WB: 0.5 - 1 ug/mL
Reactivity:	Human
Host:	Rabbit
Isotype:	IgG
Clonality:	Polyclonal
Immunogen:	IL-12A antibody was raised against an 18 amino acid peptide near the carboxy terminus of human IL-12A. The immunogen is located within the last 50 amino acids of IL-12A.
Formulation:	PBS containing 0.02% sodium azide.
Concentration:	1 mg/ml
Purification:	IL-12A antibody is affinity chromatography purified via peptide column.
Conjugation:	Unconjugated
Storage:	Store at -20°C as received.
Stability:	Stable for 12 months from date of receipt.
Predicted Protein Size:	Predicted: 22 kDa; Observed: 22 kDa
Gene Name:	interleukin 12A
Database Link:	NP_000873 Entrez Gene 3592 Human P29459
Background:	IL-12A is subunit of the cytokine IL-12 which acts on T- and natural killer cells, and has a broad array of biological activities. IL-12 is a disulfide-linked heterodimer composed of the 35-kD subunit and a 40-kD subunit that is a member of the cytokine receptor family (1). IL-12 is required for the T-cell-independent induction of interferon (IFN)-gamma, and is important for the differentiation of both Th1 and Th2 cells (1,2). The responses of lymphocytes to IL-12 are mediated by the activator of transcription protein STAT4 (2). Nitric oxide synthase 2A (NOS2A/NOS2) is found to be required for the signaling process of this cytokine in innate immunity (3).



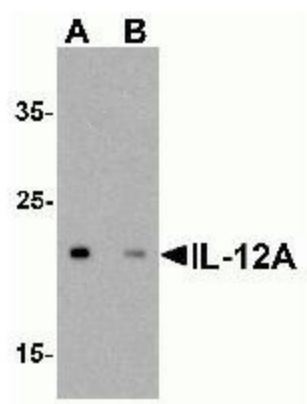
[View online »](#)

Synonyms: CLMF; IL-12A; NFSK; NKSF1; P35

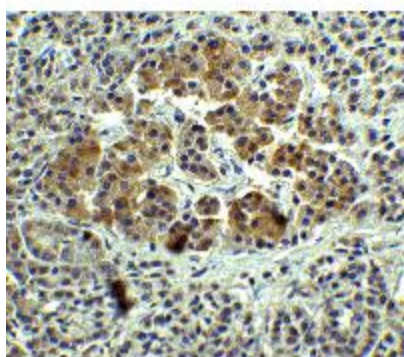
Protein Families: Druggable Genome, Secreted Protein

Protein Pathways: Allograft rejection, Cytokine-cytokine receptor interaction, Jak-STAT signaling pathway, RIG-I-like receptor signaling pathway, Toll-like receptor signaling pathway, Type I diabetes mellitus

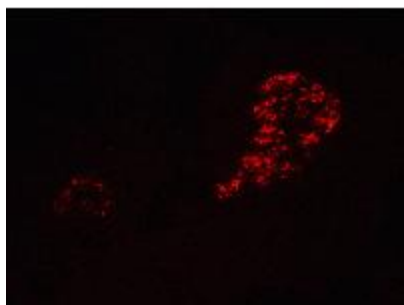
Product images:



Western blot analysis of IL-12A in HeLa cell lysate with IL-12A antibody at 0.5ug/ml in (A) the absence and (B) the presence of blocking peptide.



Immunohistochemistry of IL-12A in human pancreas tissue with IL-12A Antibody at 5ug/ml.



Immunofluorescence of IL-12A in human pancreas tissue with IL-12A Antibody at 20ug/ml.