

Product datasheet for **TA349019**

PRAS40 (AKT1S1) Rabbit Polyclonal Antibody

Product data:

Product Type:	Primary Antibodies
Applications:	IF
Recommended Dilution:	WB: 1 - 2 ug/mL
Reactivity:	Human, Mouse, Rat
Host:	Rabbit
Isotype:	IgG
Clonality:	Polyclonal
Immunogen:	AKT1S1 antibody was raised against a 19 amino acid peptide near the carboxy terminus of human AKT1S1.
Formulation:	PBS containing 0.02% sodium azide.
Concentration:	1 mg/ml
Purification:	AKT1S1 Antibody is affinity chromatography purified via peptide column.
Conjugation:	Unconjugated
Storage:	Store at -20°C as received.
Stability:	Stable for 12 months from date of receipt.
Predicted Protein Size:	Predicted: 30 kDa; Observed: 28 kDa
Gene Name:	AKT1 substrate 1
Database Link:	NP_115751 Entrez Gene 84335 Human Q96B36

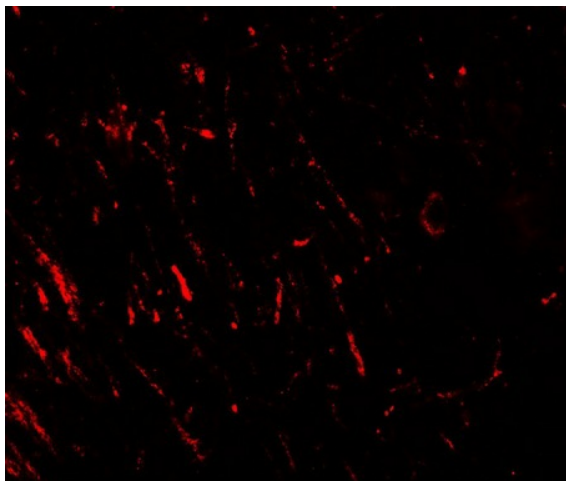
Background: AKT1S1 Antibody: The Akt signaling pathway contributes to the regulation of apoptosis after a variety of cell death signals. AKT1S1, also known as PRAS40, is a proline-rich substrate of the kinase AKT1 and is thought to play a role in neuroprotection mediated by nerve growth factor (NGF) after transient focal cerebral ischemia (1). AKT1S1 is also a substrate and potential regulator of mammalian target of rapamycin (mTOR), a serine/threonine kinase that regulates cell growth and cell cycle, and a negative regulator of autophagy (2). Treatment with the insulin-like growth factor-1 (IGF1) can induce the phosphorylation of AKT1S1 via the PI3K/AKT signaling pathway in PC12 cells (3).



[View online »](#)

Synonyms: FILTRIN; NEPH3; NLG1

Product images:



Immunofluorescence of AKT1S1 in rat brain tissue with AKT1S1 antibody at 20 ug/mL.