

## Product datasheet for **TA349017**

### APOA4 Rabbit Polyclonal Antibody

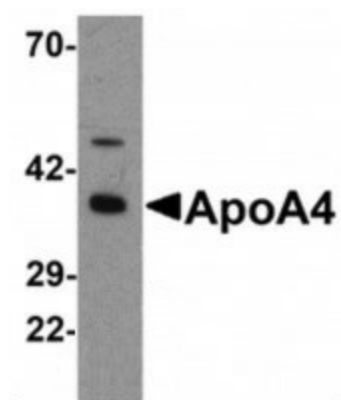
#### Product data:

Product Type:	Primary Antibodies
Applications:	WB
Recommended Dilution:	WB: 1 ug/mL
Reactivity:	Human, Chicken
Host:	Rabbit
Isotype:	IgG
Clonality:	Polyclonal
Immunogen:	ApoA4 antibody was raised against a 20 amino acid synthetic peptide near the carboxy terminus of chicken ApoA4.
Formulation:	PBS containing 0.02% sodium azide.
Concentration:	1 mg/ml
Purification:	ApoA4 Antibody is affinity chromatography purified via peptide column.
Conjugation:	Unconjugated
Storage:	Store at -20°C as received.
Stability:	Stable for 12 months from date of receipt.
Gene Name:	apolipoprotein A4
Database Link:	<a href="#">NP_990269</a> <a href="#">Entrez Gene 337 Human</a> <a href="#">P06727</a>
Background:	ApoA4 Antibody: Apolipoprotein A4 (also known as ApoA-IV) is a plasma protein that is O-linked glycoprotein after proteolytic processing. ApoA4 is a major constituent of HDL and it also can be found on the surface of newly synthesized chylomicrons. The physiological function of ApoA4 is not completely identified so far, but several evidences from vitro studies indicate that this apolipoprotein involves in several steps of the reverse cholesterol transport pathway, which transports cholesterol from peripheral cells back to the liver.
Synonyms:	MGC142154; MGC142156



[View online »](#)

## Product images:



Western blot analysis of ApoA4 in chicken small intestine tissue lysate with ApoA4 antibody at 1 ug/mL