

Product datasheet for **TA349011**

GAPDH Chicken Polyclonal Antibody

Product data:

Product Type:	Primary Antibodies
Applications:	IF, WB
Recommended Dilution:	WB: 1 ug/mL
Reactivity:	Human, Mouse, Rat
Host:	Chicken
Isotype:	IgY
Clonality:	Polyclonal
Immunogen:	GAPDH antibody was raised against a 16 amino acid synthetic peptide from near the carboxy terminus of human GAPDH. The immunogen is located within amino acids 230 - 280 of GAPDH.
Formulation:	PBS containing 0.02% sodium azide.
Concentration:	1 mg/ml
Purification:	GAPDH Antibody is affinity chromatography purified via peptide column.
Conjugation:	Unconjugated
Storage:	Store at -20°C as received.
Stability:	Stable for 12 months from date of receipt.
Gene Name:	glyceraldehyde-3-phosphate dehydrogenase
Database Link:	NP_002037 Entrez Gene 14433 Mouse Entrez Gene 24383 Rat Entrez Gene 2597 Human P04406



[View online »](#)

Background:

GAPDH Antibody: Glyceraldehyde-3-phosphate dehydrogenase (GAPDH) catalyzes the reversible oxidative phosphorylation of glyceraldehyde-3-phosphate in the presence of inorganic phosphate and nicotinamide adenine dinucleotide (NAD), an important energy-yielding step in carbohydrate metabolism. Recent evidence suggests that it also is involved in a number of cellular processes such as membrane fusion, phosphotransferase activity, DNA replication and repair, and nuclear RNA export. GAPDH has also been implicated in playing a role in different pathologies such as cancer progression, apoptosis, and neuronal diseases such as Alzheimer's and Huntington's disease. GAPDH is constitutively expressed at high levels in almost all tissues and cell lines making it ideal for use as a loading control marker in immunoblots.

Synonyms:

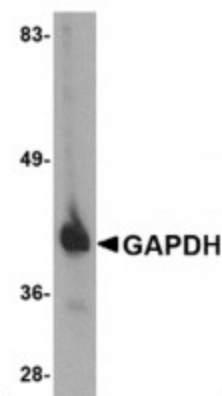
G3PD; GAPD; HEL-S-162eP

Protein Families:

ES Cell Differentiation/IPS

Protein Pathways:

Alzheimer's disease, Glycolysis / Gluconeogenesis, Metabolic pathways

Product images:

Western blot analysis of GAPDH in HeLa cell lysate with GAPDH antibody at 1ug/ml.



Immunocytochemistry of GAPDH in HeLa cells with GAPDH antibody at 5ug/ml.