

Product datasheet for **TA349007**

Vinculin (VCL) Mouse Monoclonal Antibody [Clone ID: 7E10]

Product data:

Product Type:	Primary Antibodies
Clone Name:	7E10
Applications:	WB
Recommended Dilution:	WB: 0.5 - 1 ug/mL
Reactivity:	Human, Mouse, Rat, Rabbit, Chicken
Host:	Mouse
Isotype:	IgG
Clonality:	Monoclonal
Immunogen:	Vinculin antibody was raised against a 23 amino acid peptide near the amino terminus of human Vinculin.
Formulation:	PBS containing 0.02% sodium azide.
Concentration:	1 mg/ml
Purification:	Vinculin antibody is purified via Protein A purification.
Conjugation:	Unconjugated
Storage:	Store at -20°C as received.
Stability:	Stable for 12 months from date of receipt.
Predicted Protein Size:	Predicted: 117 kDa; Observed: 120 kDa
Gene Name:	vinculin
Database Link:	NP_003364 Entrez Gene 22330 Mouse Entrez Gene 305679 Rat Entrez Gene 7414 Human P18206

Background: Vinculin is a cytoskeletal protein that plays an important role in the regulation of focal adhesions and embryonic development (1). Three structural vinculin domains include an amino-terminal head, a short flexible proline-rich region and a carboxy-terminal tail (2). Expression of vinculin were shown to be affected by the level of actin expression (2,3). Vinculin deficiencies are associated with a decrease in cell adhesion and an increase in cell motility, suggesting a possible role in metastatic growth (4). Defects in VCL are the cause of cardiomyopathy dilated type 1W (CMD1W) (5).



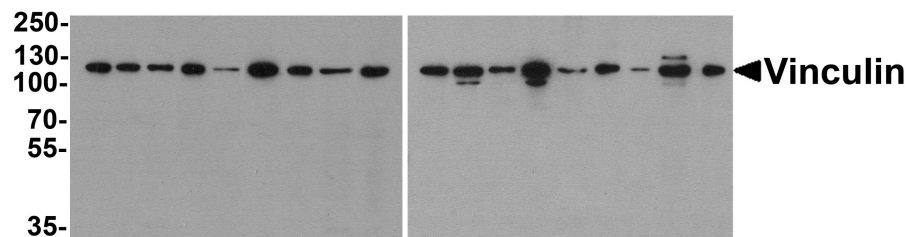
[View online »](#)

Synonyms: CMD1W; CMH15; HEL114; MV; MVCL

Protein Families: Druggable Genome

Protein Pathways: Adherens junction, Focal adhesion, Leukocyte transendothelial migration, Regulation of actin cytoskeleton

Product images:



Western blot analysis of Vinculin in 293, A431, A549, HeLa, HepG2, K562, 3T3, Raji, U937 cell lysate and rat heart, mouse lung, rat lung, mouse spleen, rat spleen, rabbit spleen, mouse brain, rabbit brain and chicken spleen tissue lysate with Vinculin ant