

Product datasheet for **TA349001**

PRDM1 Goat Polyclonal Antibody

Product data:

Product Type:	Primary Antibodies
Applications:	IHC, WB
Recommended Dilution:	WB: 0.5-1.5 ug/ml IHC: 3-5 ug/ml
Reactivity:	Human (Expected from sequence similarity: Mouse, Rat, Dog, Cow, Pig)
Host:	Goat
Isotype:	IgG
Clonality:	Polyclonal
Immunogen:	The immunogen for Anti-PRDM1 / MEL1 Antibody: Peptide with sequence C-DISDNADRLEDVED, from the internal region of the protein sequence according to NP_001189.2; NP_878911.1.
Formulation:	Tris saline, 0.02% sodium azide, pH7.3 with 0.5% bovine serum albumin. Aliquot and store at -20°C. Minimize freezing and thawing.
Concentration:	lot specific
Purification:	Purified from goat serum by ammonium sulphate precipitation followed by antigen affinity chromatography using the immunizing peptide.
Conjugation:	Unconjugated
Storage:	Store at -20°C as received.
Stability:	Stable for 12 months from date of receipt.
Gene Name:	PR domain 1
Database Link:	NP_001189 Entrez Gene 12142 MouseEntrez Gene 309871 RatEntrez Gene 481947 DogEntrez Gene 639 Human O75626
Background:	This gene encodes a protein that acts as a repressor of beta-interferon gene expression. The protein binds specifically to the PRDI (positive regulatory domain I element) of the beta-IFN gene promoter. Transcription of this gene increases upon virus induction. Two alternatively spliced transcript variants that encode different isoforms have been reported. [provided by RefSeq, Jul 2008]



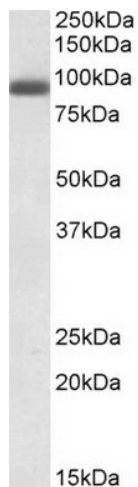
[View online »](#)

Synonyms: BLIMP1; PRDI-BF1

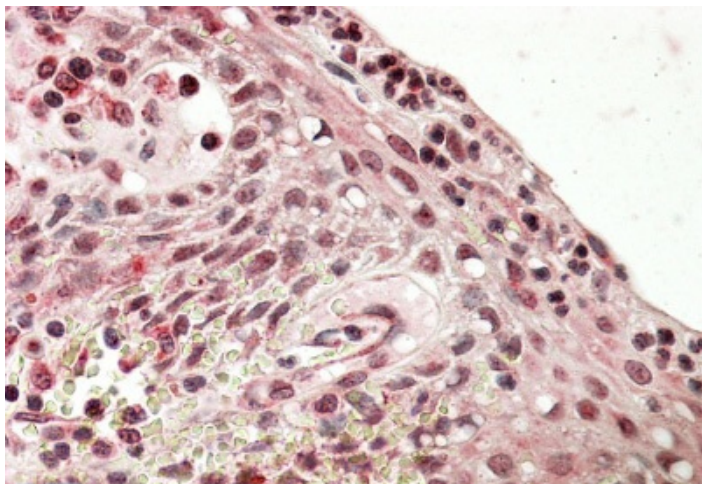
Note: This antibody is expected to recognize both reported isoforms (NP_001189.2; NP_878911.1).

Protein Families: Transcription Factors

Product images:



TA349001 (0.3 ug/ml) staining of A431 lysate (35 ug protein in RIPA buffer). Primary incubation was 1 hour. Detected by chemiluminescence.



TA349001 (3.8 ug/ml) staining of paraffin embedded Human Tonsil. Steamed antigen retrieval with citrate buffer pH 6, AP-staining.