

Product datasheet for **TA348993**

Cardiac Troponin I (TNNI3) Goat Polyclonal Antibody

Product data:

Product Type:	Primary Antibodies
Applications:	WB
Recommended Dilution:	WB: 0.03-0.1 ug/ml
Reactivity:	Human, Mouse, Rat, Pig (Expected from sequence similarity: Feline, Dog, Cow)
Host:	Goat
Isotype:	IgG
Clonality:	Polyclonal
Immunogen:	The immunogen for Anti-cardiac troponin T Antibody: Peptide with sequence C-RNRINDNQKVSKT, from the C Terminus of the protein sequence according to NP_000355.2; NP_001001430.1; NP_001001431.1; NP_001001432.1.
Formulation:	Tris saline, 0.02% sodium azide, pH7.3 with 0.5% bovine serum albumin. Aliquot and store at -20°C. Minimize freezing and thawing.
Concentration:	lot specific
Purification:	Purified from goat serum by ammonium sulphate precipitation followed by antigen affinity chromatography using the immunizing peptide.
Conjugation:	Unconjugated
Storage:	Store at -20°C as received.
Stability:	Stable for 12 months from date of receipt.
Gene Name:	troponin I3, cardiac type
Database Link:	NP_000354 Entrez Gene 21954 MouseEntrez Gene 29248 RatEntrez Gene 403566 DogEntrez Gene 7137 Human P19429



[View online »](#)

Background: The protein encoded by this gene is the tropomyosin-binding subunit of the troponin complex, which is located on the thin filament of striated muscles and regulates muscle contraction in response to alterations in intracellular calcium ion concentration. Mutations in this gene have been associated with familial hypertrophic cardiomyopathy as well as with dilated cardiomyopathy. Transcripts for this gene undergo alternative splicing that results in many tissue-specific isoforms, however, the full-length nature of some of these variants has not yet been determined. [provided by RefSeq, Jul 2008]

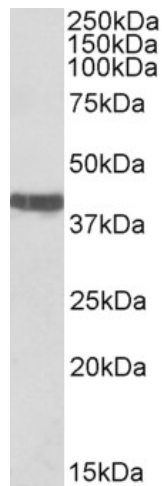
Synonyms: CMD1FF; CMD2A; CMH7; cTnl; RCM1; TNNC1

Note: This antibody is expected to recognize all reported isoforms (NP_000355.2; NP_001001430.1; NP_001001431.1; NP_001001432.1).

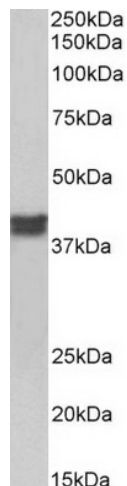
Protein Families: Druggable Genome, ES Cell Differentiation/IPS, Stem cell - Pluripotency

Protein Pathways: Cardiac muscle contraction, Dilated cardiomyopathy, Hypertrophic cardiomyopathy (HCM)

Product images:



TA348993 (0.03 ug/ml) staining of Rat Heart lysate (35 ug protein in RIPA buffer). Primary incubation was 1 hour. Detected by chemiluminescence.



TA348993 (0.01 ug/ml) staining of Pig Heart lysate (35 ug protein in RIPA buffer). Primary incubation was 1 hour. Detected by chemiluminescence.