

Product datasheet for **TA348991**

alpha 1b Adrenergic Receptor (ADRA1B) Goat Polyclonal Antibody

Product data:

Product Type:	Primary Antibodies
Applications:	WB
Recommended Dilution:	WB: 0.1-0.3 ug/ml
Reactivity:	Human, Mouse, Rat, Pig (Expected from sequence similarity: Dog, Cow)
Host:	Goat
Isotype:	IgG
Clonality:	Polyclonal
Immunogen:	The immunogen for Anti-ADRA1B Antibody: Peptide with sequence C-SSTKAKGHNPRSS, from the internal region of the protein sequence according to NP_000670.1.
Formulation:	Tris saline, 0.02% sodium azide, pH7.3 with 0.5% bovine serum albumin. Aliquot and store at -20°C. Minimize freezing and thawing.
Concentration:	lot specific
Purification:	Purified from goat serum by ammonium sulphate precipitation followed by antigen affinity chromatography using the immunizing peptide.
Conjugation:	Unconjugated
Storage:	Store at -20°C as received.
Stability:	Stable for 12 months from date of receipt.
Gene Name:	adrenoceptor alpha 1B
Database Link:	NP_000670 Entrez Gene 11548 Mouse Entrez Gene 24173 Rat Entrez Gene 403962 Dog Entrez Gene 147 Human P35368



[View online »](#)

Background:

Alpha-1-adrenergic receptors (alpha-1-ARs) are members of the G protein-coupled receptor superfamily. They activate mitogenic responses and regulate growth and proliferation of many cells. There are 3 alpha-1-AR subtypes: alpha-1A, -1B and -1D, all of which signal through the Gq/11 family of G-proteins and different subtypes show different patterns of activation. This gene encodes alpha-1B-adrenergic receptor, which induces neoplastic transformation when transfected into NIH 3T3 fibroblasts and other cell lines. Thus, this normal cellular gene is identified as a protooncogene. This gene comprises 2 exons and a single large intron of at least 20 kb that interrupts the coding region. [provided by RefSeq, Jul 2008]

Synonyms:

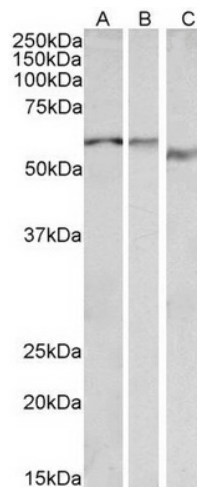
ADRA1; ALPHA1BAR

Protein Families:

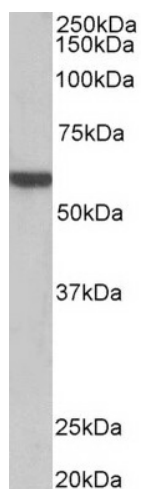
Druggable Genome, GPCR, Transmembrane

Protein Pathways:

Calcium signaling pathway, Neuroactive ligand-receptor interaction, Vascular smooth muscle contraction

Product images:

TA348991 (0.1 ug/ml) staining of Human Heart lysate (35 ug protein in RIPA buffer). Primary incubation was 1 hour. Detected by chemiluminescence.



TA348991 (0.1 ug/ml) staining of Pig Heart lysate (35 ug protein in RIPA buffer). Primary incubation was 1 hour. Detected by chemiluminescence.