

Product datasheet for **TA348990**

TATA binding protein (TBP) Goat Polyclonal Antibody

Product data:

Product Type:	Primary Antibodies
Applications:	WB
Recommended Dilution:	WB: 0.1-0.3 ug/ml
Reactivity:	Human, Mouse, Rat, Pig (Expected from sequence similarity: Dog, Cow)
Host:	Goat
Isotype:	IgG
Clonality:	Polyclonal
Immunogen:	The immunogen for Anti-TNNI3 (aa117-127) Antibody: Peptide with sequence C-KVTKNITEIAD, from the internal region of the protein sequence according to NP_000354.4.
Formulation:	Tris saline, 0.02% sodium azide, pH7.3 with 0.5% bovine serum albumin. Aliquot and store at -20°C. Minimize freezing and thawing.
Concentration:	lot specific
Purification:	Purified from goat serum by ammonium sulphate precipitation followed by antigen affinity chromatography using the immunizing peptide.
Conjugation:	Unconjugated
Storage:	Store at -20°C as received.
Stability:	Stable for 12 months from date of receipt.
Gene Name:	TATA-box binding protein
Database Link:	NP_003185 Entrez Gene 21374 Mouse Entrez Gene 117526 Rat Entrez Gene 611193 Dog Entrez Gene 6908 Human P20226



[View online »](#)

Background:

Troponin I (TnI), along with troponin T (TnT) and troponin C (TnC), is one of 3 subunits that form the troponin complex of the thin filaments of striated muscle. TnI is the inhibitory subunit; blocking actin-myosin interactions and thereby mediating striated muscle relaxation. The TnI subfamily contains three genes: TnI-skeletal-fast-twitch, TnI-skeletal-slow-twitch, and TnI-cardiac. This gene encodes the TnI-cardiac protein and is exclusively expressed in cardiac muscle tissues. Mutations in this gene cause familial hypertrophic cardiomyopathy type 7 (CMH7) and familial restrictive cardiomyopathy (RCM). [provided by RefSeq, Jul 2008]

Synonyms:

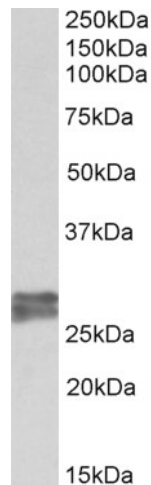
GTF2D; GTF2D1; HDL4; SCA17; TFIID

Protein Families:

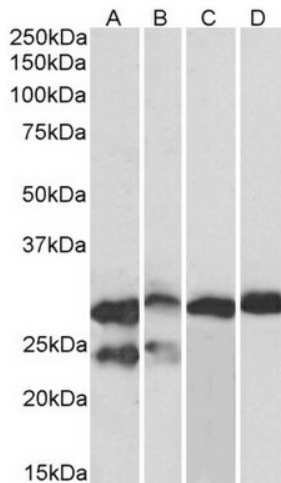
Druggable Genome, Transcription Factors

Protein Pathways:

Basal transcription factors, Huntington's disease

Product images:


TA348990 (0.2 ug/ml) staining of Human Heart lysate (35 ug protein in RIPA buffer). Primary incubation was 1 hour. Detected by chemiluminescence.



TA348990 (0.1 ug/ml) staining of adult Mouse (A), fetal Mouse (B), adult Rat (C) and adult Pig (D) Heart lysates (35 ug protein in RIPA buffer). Primary incubation was 1 hour. Detected by chemiluminescence.