

Product datasheet for **TA348988**

MDH1 Goat Polyclonal Antibody

Product data:

Product Type:	Primary Antibodies
Applications:	WB
Recommended Dilution:	WB: 0.01-0.03 ug/ml
Reactivity:	Human, Mouse, Rat, Pig (Expected from sequence similarity: Dog, Cow)
Host:	Goat
Isotype:	IgG
Clonality:	Polyclonal
Immunogen:	The immunogen for Anti-MDH1 / MOR2 Antibody: Peptide with sequence TNCLTASKSAPSIPK, from the internal region of the protein sequence according to NP_001186040.1; NP_005908.1; NP_001186041.1.
Formulation:	Tris saline, 0.02% sodium azide, pH7.3 with 0.5% bovine serum albumin. Aliquot and store at -20°C. Minimize freezing and thawing.
Concentration:	lot specific
Purification:	Purified from goat serum by ammonium sulphate precipitation followed by antigen affinity chromatography using the immunizing peptide.
Conjugation:	Unconjugated
Storage:	Store at -20°C as received.
Stability:	Stable for 12 months from date of receipt.
Gene Name:	malate dehydrogenase 1
Database Link:	NP_005908 Entrez Gene 17449 MouseEntrez Gene 24551 RatEntrez Gene 474614 DogEntrez Gene 4190 Human P40925



[View online »](#)

Background: Malate dehydrogenase catalyzes the reversible oxidation of malate to oxaloacetate, utilizing the NAD/NADH cofactor system in the citric acid cycle. The protein encoded by this gene is localized to the cytoplasm and may play pivotal roles in the malate-aspartate shuttle that operates in the metabolic coordination between cytosol and mitochondria. Alternatively spliced transcript variants encoding distinct isoforms have been found for this gene. [provided by RefSeq, Nov 2010]

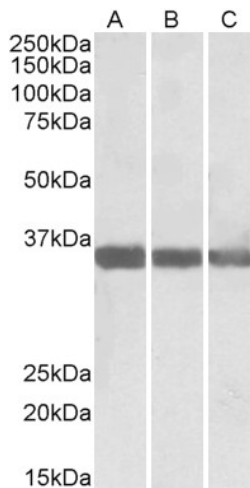
Synonyms: HEL-S-32; MDH-s; MDHA; MGC:1375; MOR2

Note: This antibody is expected to recognize all reported isoforms (NP_001186040.1; NP_005908.1; NP_001186041.1).

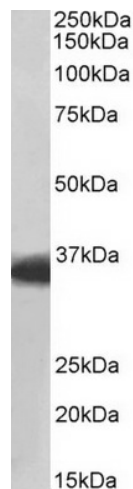
Protein Families: Druggable Genome

Protein Pathways: Citrate cycle (TCA cycle), Glyoxylate and dicarboxylate metabolism, Metabolic pathways, Pyruvate metabolism

Product images:



TA348988 (0.01 ug/ml) staining of Human (A), Mouse (B) and Rat (C) Heart lysate (35 ug protein in RIPA buffer). Primary incubation was 1 hour. Detected by chemiluminescence.



TA348988 (0.01 ug/ml) staining of Pig Heart lysate (35 ug protein in RIPA buffer). Primary incubation was 1 hour. Detected by chemiluminescence.