

Product datasheet for **TA348981**

CYP26A1 Goat Polyclonal Antibody

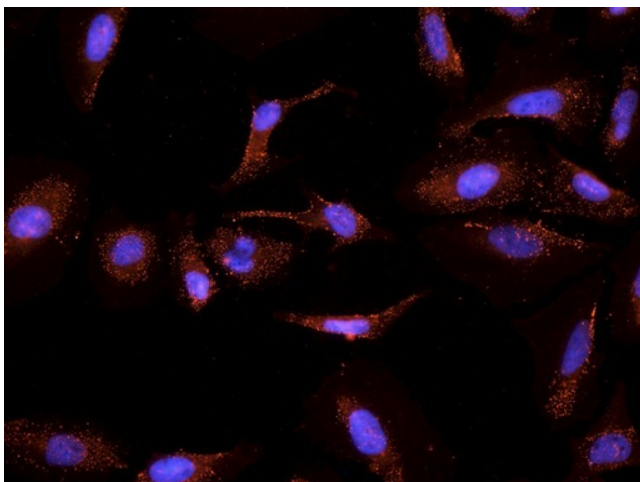
Product data:

Product Type:	Primary Antibodies
Applications:	IF
Recommended Dilution:	IHC: 4-6 ug/ml
Reactivity:	Human
Host:	Goat
Isotype:	IgG
Clonality:	Polyclonal
Immunogen:	The immunogen for Anti-CYP26A1 Antibody: Peptide with sequence C-NLPARFTHFHGE, from the internal region of the protein sequence according to NP_000774.2; NP_476498.1.
Formulation:	Tris saline, 0.02% sodium azide, pH7.3 with 0.5% bovine serum albumin. Aliquot and store at -20°C. Minimize freezing and thawing.
Concentration:	lot specific
Purification:	Purified from goat serum by ammonium sulphate precipitation followed by antigen affinity chromatography using the immunizing peptide.
Conjugation:	Unconjugated
Storage:	Store at -20°C as received.
Stability:	Stable for 12 months from date of receipt.
Gene Name:	cytochrome P450 family 26 subfamily A member 1
Database Link:	NP_000774 Entrez Gene 1592 Human O43174



[View online »](#)

- Background:** This gene encodes a member of the cytochrome P450 superfamily of enzymes. The cytochrome P450 proteins are monooxygenases which catalyze many reactions involved in drug metabolism and synthesis of cholesterol, steroids and other lipids. This endoplasmic reticulum protein acts on retinoids, including all-trans-retinoic acid (RA), with both 4-hydroxylation and 18-hydroxylation activities. This enzyme regulates the cellular level of retinoic acid which is involved in regulation of gene expression in both embryonic and adult tissues. Two alternatively spliced transcript variants of this gene, which encode the distinct isoforms, have been reported. [provided by RefSeq, Jul 2008]
- Synonyms:** CP26; CYP26; P450RAI; P450RAI1
- Note:** This antibody is expected to recognize both reported isoforms (NP_000774.2; NP_476498.1)
- Protein Families:** Druggable Genome, P450, Transmembrane
- Protein Pathways:** Retinol metabolism

Product images:

TA348981 (2.5 ug/ml) staining of PFA-fixed and TX100-treated HeLa cells after primary labelling overnight at 4°C with DAPI nuclear counterstaining in blue.