

## Product datasheet for **TA348980**

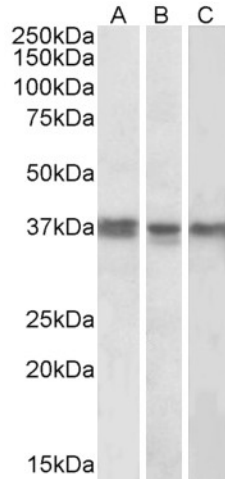
### **MKRN1 Goat Polyclonal Antibody**

#### **Product data:**

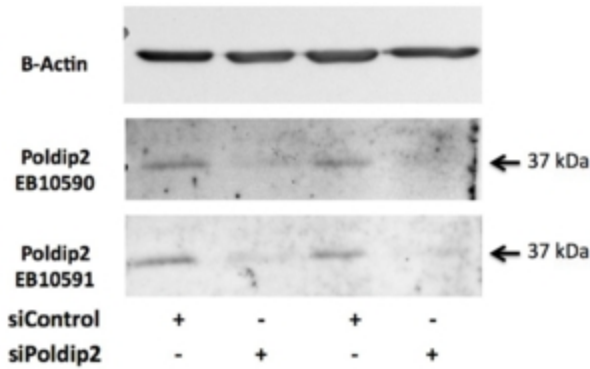
<b>Product Type:</b>	Primary Antibodies
<b>Applications:</b>	WB
<b>Recommended Dilution:</b>	WB: 1-3 ug/ml
<b>Reactivity:</b>	Human, Mouse, Rat (Expected from sequence similarity: Dog, Cow)
<b>Host:</b>	Goat
<b>Isotype:</b>	IgG
<b>Clonality:</b>	Polyclonal
<b>Immunogen:</b>	The immunogen for Anti-POLDIP2 Antibody: Peptide with sequence KTHTYYQVLIDARDC, from the internal region of the protein sequence according to NP_056399.1.
<b>Formulation:</b>	Tris saline, 0.02% sodium azide, pH7.3 with 0.5% bovine serum albumin. Aliquot and store at -20°C. Minimize freezing and thawing.
<b>Concentration:</b>	lot specific
<b>Purification:</b>	Purified from goat serum by ammonium sulphate precipitation followed by antigen affinity chromatography using the immunizing peptide.
<b>Conjugation:</b>	Unconjugated
<b>Storage:</b>	Store at -20°C as received.
<b>Stability:</b>	Stable for 12 months from date of receipt.
<b>Gene Name:</b>	makorin ring finger protein 1
<b>Database Link:</b>	<a href="#">NP_038474</a> <a href="#">Entrez Gene 54484 Mouse</a> <a href="#">Entrez Gene 475528 Dog</a> <a href="#">Entrez Gene 23608 Human</a> <a href="#">Q9UHC7</a>
<b>Background:</b>	This gene encodes a protein that interacts with the DNA polymerase delta p50 subunit, as well as with proliferating cell nuclear antigen. The encoded protein maybe play a role in the ability of the replication fork to bypass DNA lesions. Alternative splicing results in multiple transcript variants. [provided by RefSeq, Feb 2014]
<b>Synonyms:</b>	RNF61
<b>Protein Families:</b>	Druggable Genome



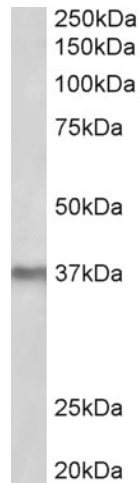
[View online »](#)

**Product images:**


TA348980 (1 ug/ml) staining of K562 (A), MCF7 (B) and Mouse Liver (C) lysates (35 ug protein in RIPA buffer). Primary incubation was overnight at 4C. Detected by chemiluminescence.



TA348980 (0.5 ug/ml) staining of Rat VSMC lysate (35 ug protein in RIPA buffer). Primary incubation was overnight at 4C. Detected by chemiluminescence. Data provided by Everest Grant winner Dr. B. Lassegue, Emory University, Atlanta, USA



TA348980 (2 ug/ml) staining of Mouse Liver lysate (35 ug protein in RIPA buffer). Primary incubation was overnight at 4C. Detected by chemiluminescence.