

## Product datasheet for **TA348968**

### Hdac1 Goat Polyclonal Antibody

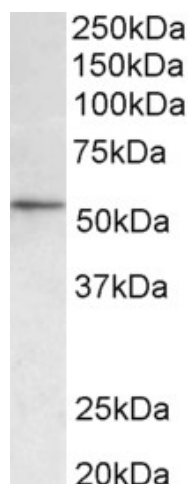
#### Product data:

Product Type:	Primary Antibodies
Applications:	WB
Recommended Dilution:	WB: 0.3-1 ug/ml
Reactivity:	Human, Mouse (Expected from sequence similarity: Rat, Pig, Cow)
Host:	Goat
Isotype:	IgG
Clonality:	Polyclonal
Immunogen:	The immunogen for Anti-Hdac1 (aa385-396) Antibody: Peptide with sequence C-PEDAIPEESGDE, from the internal region of the protein sequence according to NP_032254.1.
Formulation:	Tris saline, 0.02% sodium azide, pH7.3 with 0.5% bovine serum albumin. Aliquot and store at -20°C. Minimize freezing and thawing.
Concentration:	lot specific
Purification:	Purified from goat serum by ammonium sulphate precipitation followed by antigen affinity chromatography using the immunizing peptide.
Conjugation:	Unconjugated
Storage:	Store at -20°C as received.
Stability:	Stable for 12 months from date of receipt.
Gene Name:	histone deacetylase 1
Database Link:	<a href="#">NP_032254</a> <a href="#">Entrez Gene 3065 Human</a> <a href="#">Entrez Gene 297893 Rat</a> <a href="#">Entrez Gene 433759 Mouse</a> <a href="#">O09106</a>
Synonyms:	DKFZp686H12203; GON-10; HD1; RPD3; RPD3L1
Note:	This antibody may cross-react to HDAC2

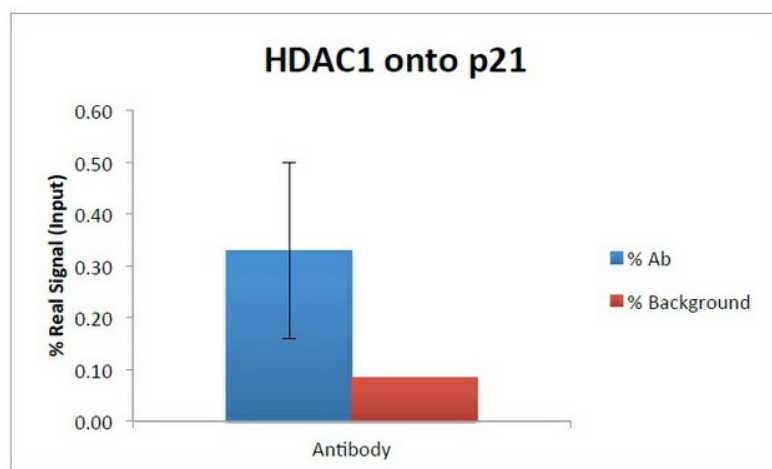


[View online »](#)

**Product images:**



TA348968 (0.3 ug/ml) staining of NIH3T3 lysate (35 ug protein in RIPA buffer). Primary incubation was 1 hour. Detected by chemiluminescence.



ChIP of 2 ug TA348968 with MCF7 chromatin using the Chromatrap® spin column sonication kit (Protein G) measuring H3 enrichment onto the p21 locus.