

Product datasheet for **TA348966**

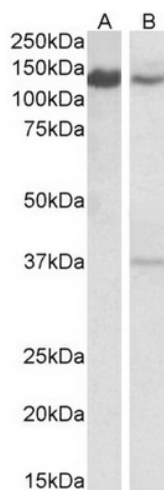
ARS2 (SRRT) Goat Polyclonal Antibody

Product data:

Product Type:	Primary Antibodies
Applications:	WB
Recommended Dilution:	WB: 0.1-0.3 ug/ml
Reactivity:	Human, Mouse (Expected from sequence similarity: Rat, Dog, Pig, Cow)
Host:	Goat
Isotype:	IgG
Clonality:	Polyclonal
Immunogen:	The immunogen for Anti-SRRT / ARS2 Antibody: Peptide with sequence C-DPRAIVEYRDLDPD, from the C Terminus of the protein sequence according to NP_056992.4; NP_001122324.1; NP_001122325.1; NP_001122326.1.
Formulation:	Tris saline, 0.02% sodium azide, pH7.3 with 0.5% bovine serum albumin. Aliquot and store at -20°C. Minimize freezing and thawing.
Concentration:	lot specific
Purification:	Purified from goat serum by ammonium sulphate precipitation followed by antigen affinity chromatography using the immunizing peptide.
Conjugation:	Unconjugated
Storage:	Store at -20°C as received.
Stability:	Stable for 12 months from date of receipt.
Gene Name:	serrate, RNA effector molecule
Database Link:	NP_001122324 Entrez Gene 83701 MouseEntrez Gene 686980 RatEntrez Gene 479731 DogEntrez Gene 51593 Human Q9BXP5
Synonyms:	ARS2; ASR2; serrate
Note:	This antibody is expected to recognize all reported isoform (NP_056992.4; NP_001122324.1; NP_001122325.1; NP_001122326.1).



[View online »](#)

Product images:

TA348966 (0.1 ug/ml) staining of Daudi (A) and Mouse Spleen (B) lysates (35 ug protein in RIPA buffer). Primary incubation was 1 hour. Detected by chemiluminescence.