

Product datasheet for **TA348961**

FCRL1 Goat Polyclonal Antibody

Product data:

Product Type:	Primary Antibodies
Applications:	WB
Recommended Dilution:	WB: 1-3 ug/ml
Reactivity:	Human (Expected from sequence similarity: Mouse, Rat, Dog, Pig, Cow)
Host:	Goat
Isotype:	IgG
Clonality:	Polyclonal
Immunogen:	The immunogen for Anti-TICAM-1 / TRIF Antibody: Peptide with sequence PDGATFCEDFQVP, from the internal region of the protein sequence according to NP_891549.1.
Formulation:	Tris saline, 0.02% sodium azide, pH7.3 with 0.5% bovine serum albumin. Aliquot and store at -20°C. Minimize freezing and thawing.
Concentration:	lot specific
Purification:	Purified from goat serum by ammonium sulphate precipitation followed by antigen affinity chromatography using the immunizing peptide.
Conjugation:	Unconjugated
Storage:	Store at -20°C as received.
Stability:	Stable for 12 months from date of receipt.
Gene Name:	Fc receptor like 1
Database Link:	NP_443170 Entrez Gene 229499 Mouse Entrez Gene 115350 Human Q96LA6
Background:	This gene encodes an adaptor protein containing a Toll/interleukin-1 receptor (TIR) homology domain, which is an intracellular signaling domain that mediates protein-protein interactions between the Toll-like receptors (TLRs) and signal-transduction components. This protein is involved in native immunity against invading pathogens. It specifically interacts with toll-like receptor 3, but not with other TLRs, and this association mediates dsRNA induction of interferon-beta through activation of nuclear factor kappa-B, during an antiviral immune response. [provided by RefSeq, Jan 2012]

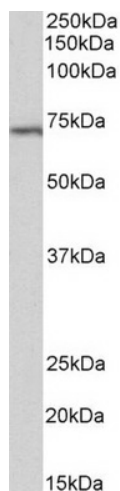


[View online »](#)

Synonyms: CD307a; FCRH1; IFGP1; IRTA5

Protein Families: Transmembrane

Product images:



TA348961 (2 ug/ml) staining of Daudi lysate (35 ug protein in RIPA buffer). Primary incubation was 1 hour. Detected by chemiluminescence.