

Product datasheet for **TA348956**

RACK1 Goat Polyclonal Antibody

Product data:

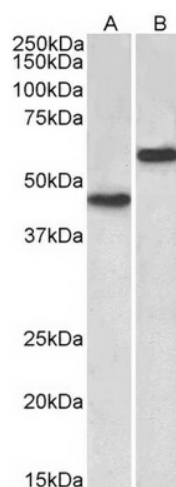
Product Type:	Primary Antibodies
Applications:	WB
Recommended Dilution:	WB: 1-3 ug/ml
Reactivity:	Human
Host:	Goat
Isotype:	IgG
Clonality:	Polyclonal
Immunogen:	The immunogen for Anti-LYVE1 Antibody: Peptide with sequence C-STETEPFVENK, from the internal region of the protein sequence according to NP_006682.2.
Formulation:	Tris saline, 0.02% sodium azide, pH7.3 with 0.5% bovine serum albumin. Aliquot and store at -20°C. Minimize freezing and thawing.
Concentration:	lot specific
Purification:	Purified from goat serum by ammonium sulphate precipitation followed by antigen affinity chromatography using the immunizing peptide.
Conjugation:	Unconjugated
Storage:	Store at -20°C as received.
Stability:	Stable for 12 months from date of receipt.
Gene Name:	receptor for activated C kinase 1
Database Link:	NP_006089 Entrez Gene 10399 Human P63244
Background:	This gene encodes a type I integral membrane glycoprotein. The encoded protein acts as a receptor and binds to both soluble and immobilized hyaluronan. This protein may function in lymphatic hyaluronan transport and have a role in tumor metastasis. [provided by RefSeq, Jul 2008]
Synonyms:	Gnb2-rs1; GNB2L1; H12.3; HLC-7; PIG21
Note:	This antibody binds to part of the extracellular domain.



[View online »](#)

Protein Families: Druggable Genome

Product images:



TA348956 (2 ug/ml) staining of Human Cerebellum (A) and Liver (B) lysates (35 ug protein in RIPA buffer). Primary incubation was 1 hour. Detected by chemiluminescence.