

Product datasheet for **TA348951**

ATG4A Goat Polyclonal Antibody

Product data:

Product Type:	Primary Antibodies
Applications:	WB
Recommended Dilution:	WB: 0.3-1 ug/ml
Reactivity:	Human
Host:	Goat
Isotype:	IgG
Clonality:	Polyclonal
Immunogen:	The immunogen for Anti-FCRL1 Antibody: Peptide with sequence C-SRLRKANITDVD, from the C Terminus of the protein sequence according to NP_443170.1; NP_001152870.1.
Formulation:	Tris saline, 0.02% sodium azide, pH7.3 with 0.5% bovine serum albumin. Aliquot and store at -20°C. Minimize freezing and thawing.
Concentration:	lot specific
Purification:	Purified from goat serum by ammonium sulphate precipitation followed by antigen affinity chromatography using the immunizing peptide.
Conjugation:	Unconjugated
Storage:	Store at -20°C as received.
Stability:	Stable for 12 months from date of receipt.
Gene Name:	autophagy related 4A cysteine peptidase
Database Link:	NP_840054 Entrez Gene 115201 Human Q8WYN0
Background:	This gene encodes a member of the immunoglobulin receptor superfamily and is one of several Fc receptor-like glycoproteins clustered on the long arm of chromosome 1. The encoded protein contains three extracellular C2-like immunoglobulin domains, a transmembrane domain and a cytoplasmic domain with two immunoreceptor-tyrosine activation motifs. This protein may play a role in the regulation of cancer cell growth. Alternative splicing results in multiple transcript variants. [provided by RefSeq, Apr 2009]
Synonyms:	APG4A; AUTL2



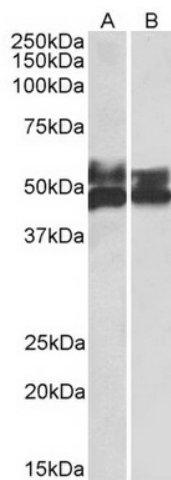
[View online »](#)

Note: This antibody is expected to recognize isoform 1 (NP_443170.1) and isoform 3 (NP_001152870.1).

Protein Families: Protease

Protein Pathways: Regulation of autophagy

Product images:



TA348951 (0.5 ug/ml) staining of Human Tonsil (A) and Thymus (B) lysates (35 ug protein in RIPA buffer). Primary incubation was 1 hour. Detected by chemiluminescence.