

Product datasheet for **TA348950**

SYVN1 Goat Polyclonal Antibody

Product data:

Product Type:	Primary Antibodies
Applications:	WB
Recommended Dilution:	WB: 0.3-1 ug/ml
Reactivity:	Human
Host:	Goat
Isotype:	IgG
Clonality:	Polyclonal
Immunogen:	The immunogen for Anti-FCRL1 (aa165-177) Antibody: Peptide with sequence C-TAEYEIPSVRES D, from the internal region of the protein sequence according to NP_443170.1; NP_001152869.1; NP_001152870.1.
Formulation:	Tris saline, 0.02% sodium azide, pH7.3 with 0.5% bovine serum albumin. Aliquot and store at -20°C. Minimize freezing and thawing.
Concentration:	lot specific
Purification:	Purified from goat serum by ammonium sulphate precipitation followed by antigen affinity chromatography using the immunizing peptide.
Conjugation:	Unconjugated
Storage:	Store at -20°C as received.
Stability:	Stable for 12 months from date of receipt.
Gene Name:	synoviolin 1
Database Link:	NP_757385 Entrez Gene 84447 Human Q86TM6

Background: This gene encodes a member of the immunoglobulin receptor superfamily and is one of several Fc receptor-like glycoproteins clustered on the long arm of chromosome 1. The encoded protein contains three extracellular C2-like immunoglobulin domains, a transmembrane domain and a cytoplasmic domain with two immunoreceptor-tyrosine activation motifs. This protein may play a role in the regulation of cancer cell growth. Alternative splicing results in multiple transcript variants. [provided by RefSeq, Apr 2009]



[View online »](#)

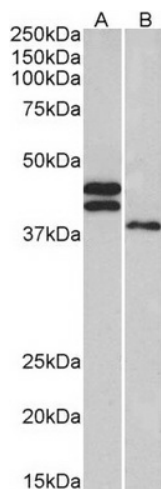
Synonyms: DER3; HRD1

Note: This antibody is expected to recognize all reported isoforms (NP_443170.1; NP_001152869.1; NP_001152870.1).

Protein Families: Druggable Genome, Transmembrane

Protein Pathways: Ubiquitin mediated proteolysis

Product images:



TA348950 (0.3 ug/ml) staining of Human Heart (A) and Liver (B) lysates (35 ug protein in RIPA buffer). Primary incubation was 1 hour. Detected by chemiluminescence.