

Product datasheet for **TA348947**

FCRL2 Goat Polyclonal Antibody

Product data:

Product Type:	Primary Antibodies
Applications:	WB
Recommended Dilution:	WB: 1-3 ug/ml
Reactivity:	Human
Host:	Goat
Isotype:	IgG
Clonality:	Polyclonal
Immunogen:	The immunogen for Anti-FCRL2 (aa92-104) Antibody: Peptide with sequence C-DKTSNIVKIKVQE, from the internal region of the protein sequence according to NP_110391.2.
Formulation:	Tris saline, 0.02% sodium azide, pH7.3 with 0.5% bovine serum albumin. Aliquot and store at -20°C. Minimize freezing and thawing.
Concentration:	lot specific
Purification:	Purified from goat serum by ammonium sulphate precipitation followed by antigen affinity chromatography using the immunizing peptide.
Conjugation:	Unconjugated
Storage:	Store at -20°C as received.
Stability:	Stable for 12 months from date of receipt.
Gene Name:	Fc receptor like 2
Database Link:	NP_001152960 Entrez Gene 79368 Human Q96LA5



[View online »](#)

Background:

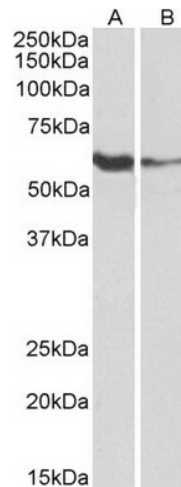
This gene encodes a member of the immunoglobulin receptor superfamily and is one of several Fc receptor-like glycoproteins clustered on the long arm of chromosome 1. The encoded protein has four extracellular C2-type immunoglobulin domains, a transmembrane domain and a cytoplasmic domain that contains one immunoreceptor-tyrosine activation motif and two immunoreceptor-tyrosine inhibitory motifs. This protein may be a prognostic marker for chronic lymphocytic leukemia. Alternatively spliced transcript variants have been described, but their biological validity has not been determined. [provided by RefSeq, Apr 2009]

Synonyms:

CD307b; FCRH2; IFGP4; IRTA4; SPAP1; SPAP1A; SPAP1B; SPAP1C

Protein Families:

Druggable Genome, Transmembrane

Product images:

TA348947 (1 ug/ml) staining of Human Tonsil (A) and Daudi (B) lysates (35 ug protein in RIPA buffer). Primary incubation was 1 hour. Detected by chemiluminescence.