

## Product datasheet for **TA348944**

### MON1A Goat Polyclonal Antibody

#### Product data:

Product Type:	Primary Antibodies
Applications:	IHC
Recommended Dilution:	IHC: 2-4 ug/ml
Reactivity:	Human
Host:	Goat
Isotype:	IgG
Clonality:	Polyclonal
Immunogen:	The immunogen for Anti-ATG4A Antibody: Peptide with sequence TEENGTVNDQTFHC, from the internal region of the protein sequence according to NP_443168.2; NP_840054.1.
Formulation:	Tris saline, 0.02% sodium azide, pH7.3 with 0.5% bovine serum albumin. Aliquot and store at -20°C. Minimize freezing and thawing.
Concentration:	lot specific
Purification:	Purified from goat serum by ammonium sulphate precipitation followed by antigen affinity chromatography using the immunizing peptide.
Conjugation:	Unconjugated
Storage:	Store at -20°C as received.
Stability:	Stable for 12 months from date of receipt.
Gene Name:	MON1 homolog A, secretory trafficking associated
Database Link:	<a href="#">NP_115731</a> <a href="#">Entrez Gene 84315 Human</a> <a href="#">Q86VX9</a>



[View online »](#)

**Background:**

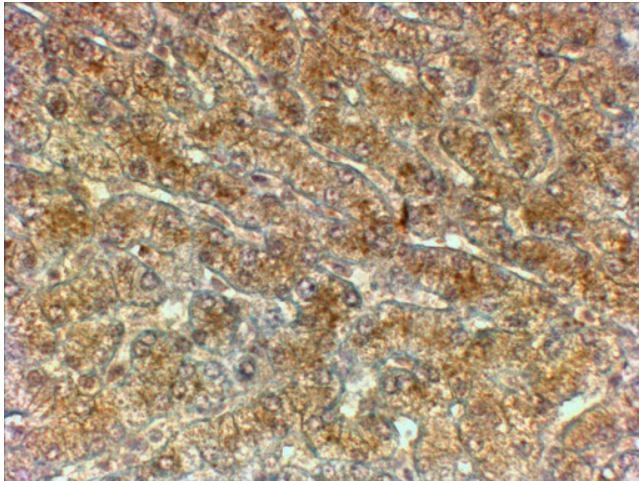
Autophagy is the process by which endogenous proteins and damaged organelles are destroyed intracellularly. Autophagy is postulated to be essential for cell homeostasis and cell remodeling during differentiation, metamorphosis, non-apoptotic cell death, and aging. Reduced levels of autophagy have been described in some malignant tumors, and a role for autophagy in controlling the unregulated cell growth linked to cancer has been proposed. This gene encodes a member of the autophagin protein family. The encoded protein is also designated as a member of the C-54 family of cysteine proteases. Transcript variants that encode distinct isoforms have been identified. [provided by RefSeq, Jul 2008]

**Synonyms:**

SAND1

**Note:**

This antibody is expected to recognize both reported isoforms (NP\_443168.2; NP\_840054.1)

**Product images:**

TA348944 (2 ug/ml) staining of paraffin embedded Human Liver. Steamed antigen retrieval with citrate buffer pH 6, HRP-staining.