

Product datasheet for **TA348942**

Cardiac Troponin T (TNNT2) Goat Polyclonal Antibody

Product data:

Product Type:	Primary Antibodies
Applications:	WB
Recommended Dilution:	WB: 0.01-0.03 ug/ml
Reactivity:	Human (Expected from sequence similarity: Mouse, Dog, Cow)
Host:	Goat
Isotype:	IgG
Clonality:	Polyclonal
Immunogen:	The immunogen for Anti-VASP (aa236-249) Antibody: Peptide with sequence C-RKVSKQEEASGGPT, from the internal region of the protein sequence according to NP_003361.1.
Formulation:	Tris saline, 0.02% sodium azide, pH7.3 with 0.5% bovine serum albumin. Aliquot and store at -20°C. Minimize freezing and thawing.
Concentration:	lot specific
Purification:	Purified from goat serum by ammonium sulphate precipitation followed by antigen affinity chromatography using the immunizing peptide.
Conjugation:	Unconjugated
Storage:	Store at -20°C as received.
Stability:	Stable for 12 months from date of receipt.
Gene Name:	troponin T2, cardiac type
Database Link:	NP_000355 Entrez Gene 21956 Mouse Entrez Gene 403532 Dog Entrez Gene 7139 Human P45379



[View online »](#)

Background:

Vasodilator-stimulated phosphoprotein (VASP) is a member of the Ena-VASP protein family. Ena-VASP family members contain an EHV1 N-terminal domain that binds proteins containing E/DFPPPPXD/E motifs and targets Ena-VASP proteins to focal adhesions. In the mid-region of the protein, family members have a proline-rich domain that binds SH3 and WW domain-containing proteins. Their C-terminal EVH2 domain mediates tetramerization and binds both G and F actin. VASP is associated with filamentous actin formation and likely plays a widespread role in cell adhesion and motility. VASP may also be involved in the intracellular signaling pathways that regulate integrin-extracellular matrix interactions. VASP is regulated by the cyclic nucleotide-dependent kinases PKA and PKG. [provided by RefSeq, Jul 2008]

Synonyms:

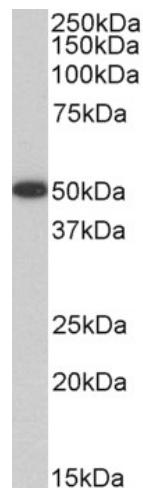
CMD1D; CMH2; CMPD2; cTnT; LVNC6; RCM3; TnTC

Protein Families:

Druggable Genome

Protein Pathways:

Cardiac muscle contraction, Dilated cardiomyopathy, Hypertrophic cardiomyopathy (HCM)

Product images:

TA348942 (0.01 ug/ml) staining of Human Platelets lysate (35 ug protein in RIPA buffer). Primary incubation was 1 hour. Detected by chemiluminescence.