

Product datasheet for **TA348941**

VASP Goat Polyclonal Antibody

Product data:

| | |
|-----------------------|--|
| Product Type: | Primary Antibodies |
| Applications: | FC, IF, IHC, PEP-ELISA, WB |
| Recommended Dilution: | WB: 1-3 ug/ml |
| Reactivity: | Human (Expected from sequence similarity: Mouse, Rat, Dog, Pig, Cow) |
| Host: | Goat |
| Isotype: | IgG |
| Clonality: | Polyclonal |
| Immunogen: | The immunogen for Anti-Vimentin Antibody: Peptide with sequence C-QVINETSQHDDLE, from the C Terminus of the protein sequence according to NP_003371.2. |
| Formulation: | Tris saline, 0.02% sodium azide, pH7.3 with 0.5% bovine serum albumin. Aliquot and store at -20°C. Minimize freezing and thawing. |
| Concentration: | lot specific |
| Purification: | Purified from goat serum by ammonium sulphate precipitation followed by antigen affinity chromatography using the immunizing peptide. |
| Conjugation: | Unconjugated |
| Storage: | Store at -20°C as received. |
| Stability: | Stable for 12 months from date of receipt. |
| Gene Name: | vasodilator-stimulated phosphoprotein |
| Database Link: | NP_003361 Entrez Gene 22323 MouseEntrez Gene 361517 RatEntrez Gene 403936 DogEntrez Gene 7408 Human P50552 |



[View online »](#)

Background:

This gene encodes a member of the intermediate filament family. Intermediate filaments, along with microtubules and actin microfilaments, make up the cytoskeleton. The protein encoded by this gene is responsible for maintaining cell shape, integrity of the cytoplasm, and stabilizing cytoskeletal interactions. It is also involved in the immune response, and controls the transport of low-density lipoprotein (LDL)-derived cholesterol from a lysosome to the site of esterification. It functions as an organizer of a number of critical proteins involved in attachment, migration, and cell signaling. Mutations in this gene causes a dominant, pulverulent cataract. [provided by RefSeq, Jun 2009]

Synonyms:

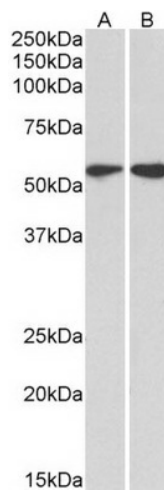
vasodilator-stimulated phosphoprotein

Protein Families:

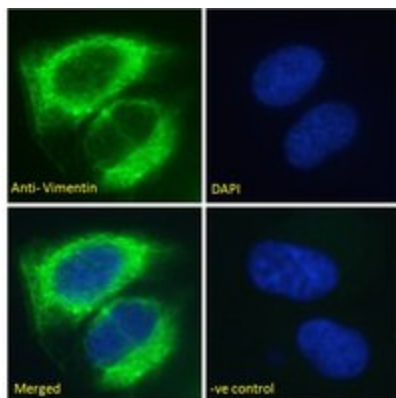
Druggable Genome, Stem cell - Pluripotency

Protein Pathways:

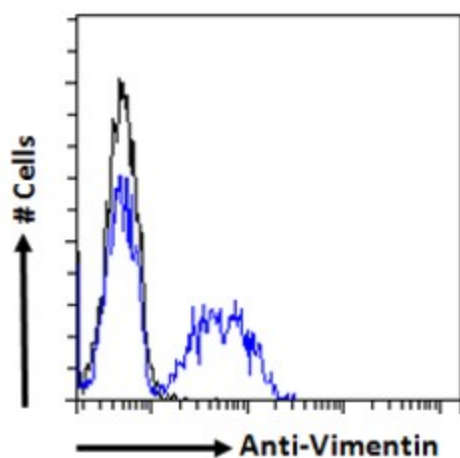
Fc gamma R-mediated phagocytosis, Focal adhesion, Leukocyte transendothelial migration

Product images:


TA348941 (2 ug/ml) staining of HeLa (A) and Jurkat (B) lysates (35 ug protein in RIPA buffer). Primary incubation was 1 hour. Detected by chemiluminescence.



TA348941 Immunofluorescence analysis of paraformaldehyde fixed U2OS cells, permeabilized with 0.15% Triton. Primary incubation 1hr (5ug/ml) followed by Alexa Fluor 488 secondary antibody (2ug/ml), showing cytoplasmic/Intermediate filament staining. The nuclear stain is DAPI (blue). Negative control: Unimmunized goat IgG (5ug/ml) followed by Alexa Fluor 488 secondary antibody (2ug/ml).



Flow cytometric analysis of paraformaldehyde fixed HeLa cells (blue line), permeabilized with 0.5% Triton. Primary incubation 1hr (10ug/ml) followed by Alexa Fluor 488 secondary antibody (0.4ug/ml). IgG control: Unimmunized goat IgG (black line) followed by Alexa Fluor 488 secondary antibody.