

Product datasheet for **TA348935**

BMP1 Goat Polyclonal Antibody

Product data:

Product Type:	Primary Antibodies
Applications:	WB
Recommended Dilution:	WB: 1-3 ug/ml
Reactivity:	Human (Expected from sequence similarity: Mouse, Rat, Dog, Pig, Cow)
Host:	Goat
Isotype:	IgG
Clonality:	Polyclonal
Immunogen:	The immunogen for Anti-BMP1 (aa284-296) Antibody: Peptide with sequence C-DTIVPKYEVNGVK, from the internal region of the protein sequence according to NP_001190.1; NP_006120.1.
Formulation:	Tris saline, 0.02% sodium azide, pH7.3 with 0.5% bovine serum albumin. Aliquot and store at -20°C. Minimize freezing and thawing.
Concentration:	lot specific
Purification:	Purified from goat serum by ammonium sulphate precipitation followed by antigen affinity chromatography using the immunizing peptide.
Conjugation:	Unconjugated
Storage:	Store at -20°C as received.
Stability:	Stable for 12 months from date of receipt.
Gene Name:	bone morphogenetic protein 1
Database Link:	NP_001190 Entrez Gene 12153 Mouse Entrez Gene 83470 Rat Entrez Gene 100856514 Dog Entrez Gene 649 Human P13497
Background:	This gene encodes a protein that is capable of inducing formation of cartilage in vivo. Although other bone morphogenetic proteins are members of the TGF-beta superfamily, This gene encodes a protein that is not closely related to other known growth factors. This gene is expressed as alternatively spliced variants that share an N-terminal protease domain but differ in their C-terminal region. [provided by RefSeq, Aug 2008]



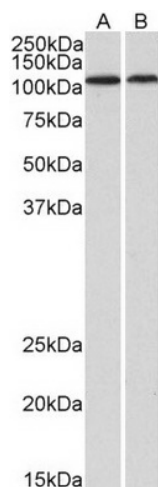
[View online »](#)

Synonyms: OI13; PCOLC; PCP; PCP2; TLD

Note: This antibody is expected to recognize both reported isoforms (NP_001190.1; NP_006120.1).

Protein Families: Druggable Genome, Protease

Product images:



TA348935 (1 ug/ml) staining of Human Heart (A) and Kidney (B) lysates (35 ug protein in RIPA buffer). Primary incubation was 1 hour. Detected by chemiluminescence.