

## Product datasheet for **TA348926**

### Fibrinogen alpha chain (FGA) Goat Polyclonal Antibody

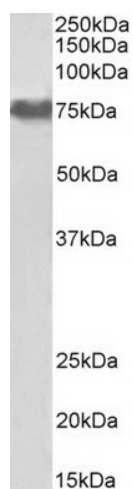
#### Product data:

|                       |  |
|-----------------------|--|
| Product Type:         | Primary Antibodies   |
| Applications:         | WB   |
| Recommended Dilution: | WB: 0.01-0.03 ug/ml  |
| Reactivity:           | Human  |
| Host:                 | Goat   |
| Isotype:              | IgG  |
| Clonality:            | Polyclonal   |
| Immunogen:            | The immunogen for Anti-fibrinogen alpha chain (aa123-135) Antibody: Peptide with sequence C-RDNTYNRVSEDLR, from the internal region of the protein sequence according to NP_000499.1; NP_068657.1. |
| Formulation:          | Tris saline, 0.02% sodium azide, pH7.3 with 0.5% bovine serum albumin. Aliquot and store at -20°C. Minimize freezing and thawing.  |
| Concentration:        | lot specific   |
| Purification:         | Purified from goat serum by ammonium sulphate precipitation followed by antigen affinity chromatography using the immunizing peptide.  |
| Conjugation:          | Unconjugated   |
| Storage:              | Store at -20°C as received.  |
| Stability:            | Stable for 12 months from date of receipt.   |
| Gene Name:            | fibrinogen alpha chain   |
| Database Link:        | <a href="#">NP_068657</a><br><a href="#">Entrez Gene 2243 Human P02671</a>   |



[View online »](#)

|                          |  |
|--------------------------|--|
| <b>Background:</b>       | The protein encoded by this gene is the alpha component of fibrinogen, a blood-borne glycoprotein comprised of three pairs of nonidentical polypeptide chains. Following vascular injury, fibrinogen is cleaved by thrombin to form fibrin which is the most abundant component of blood clots. In addition, various cleavage products of fibrinogen and fibrin regulate cell adhesion and spreading, display vasoconstrictor and chemotactic activities, and are mitogens for several cell types. Mutations in this gene lead to several disorders, including dysfibrinogenemia, hypofibrinogenemia, afibrinogenemia and renal amyloidosis. Alternative splicing results in two isoforms which vary in the carboxy-terminus. [provided by RefSeq, Jul 2008] |
| <b>Synonyms:</b>         | Fib2   |
| <b>Note:</b>             | This antibody is expected to recognize both reported isoforms (NP_000499.1; NP_068657.1).  |
| <b>Protein Families:</b> | Druggable Genome, Secreted Protein   |
| <b>Protein Pathways:</b> | Complement and coagulation cascades  |

**Product images:**

TA348926 (0.01 ug/ml) staining of Human Platelets lysate (35 ug protein in RIPA buffer). Primary incubation was 1 hour. Detected by chemiluminescence.